

Jeffrey Clark<sup>1</sup>; Andrew Knudsen<sup>2</sup>; Greg Griffin<sup>3</sup>, and Vince Dyer<sup>4</sup>  
<sup>1</sup>Chair of Environmental Studies, <sup>2</sup>Chair of Geology, <sup>3</sup>Director of Campus Center, <sup>4</sup>LU 2010

## GREEN ROOTS OVERVIEW

### HISTORY:

In May 2008 President Beck forms the "Green Roots" committee charged with focusing campus attention and efforts on improving Lawrence's environmental stewardship

### MISSION STATEMENT:

*To establish an institutional framework within which we can cultivate habits of mind and dispositions that lead to ecological intelligence and environmental sustainability.*

### COMPOSITION:

- 5 Faculty Members (divisional representation)
- 2 Students (representatives from Greenfire - a Student Organization - and the newly formed Lawrence University Community Council (LUCC) Committee on Environmental Responsibility)
- 3 Staff including Director of Facilities Services and Director of Campus Center
- Dean of Students

### INITIATIVES/ACCOMPLISHMENTS

- First LU LEED certified building\*
- Trayless dining\*
- Reduction in disposables\*
- New HVAC Policy\*
- Extracurricular Programming\*
- Bike-Share Program
- Admissions goes paperless
- Course catalog no longer printed
- Printers upgraded to double sided
- Labs use print release monitors
- Alumni Magazine Printed on FSC paper
- Increased frequency of shuttles to areas of interest
- Recycled Notebooks and other initiatives during Welcome Week
- LUCC CER establishes \$5000 green fund
- Green Video Competition

### GOALS FOR 2009-10:

- 8% Reduction in energy consumption\*
- Reduce paper use by 500,000 Sheets
- Improve waste diversion rate to 40% (from 33%)
- Purchase recycled paper campus wide
- Implementation of a long term sustainability plan

\*Detailed on this poster



## Warch Campus Center

Campus Center just opened in September, 2009. It is a modern building marked by beautiful open spaces with natural stone, and amazing views embracing the Fox River.

### COLLABORATIVE ELEMENTS:

- **Task Force on Residential Life** (Trustee, faculty, staff & student committee). Endorsed by the Board of Trustees
- **Campus Forums** (involved entire community)  
Dozens of forums and meetings to garner input from all campus constituencies
- **Campus Center Planning Committee** (Faculty, staff and students) Worked closely with architects and builders to oversee environmental friendliness, energy conservation and Gold LEED certification (anticipated)
- **Bon Appetit/Lawrence University partnership** Collaboration with Green Roots, LUCC environmental responsibility on green dining initiatives

### INITIATIVES/ACCOMPLISHMENTS:

- **Building Features**
  - Green roof.
  - passive solar site design
  - 95% of construction waste recycled
  - Locally quarried stone and glulam timbers. Glulams provide a resource-efficient use of wood utilizing fast growing trees while safeguarding older forests



- Reduced use of "to go" cups by distributing 1,900 **water bottles** given to students, faculty and staff
- Reduced water consumption and food waste by going to **100 % trayless dining**
- Enhanced relationship between sustainable garden (SLUG) and dining services
- Elimination of all bottled water in retail and catering
- No disposables at campus picnics
- All *green seal* certified cleaning products



### WHAT'S NEXT:

- Expanded recycling to include #5 plastics
- Continued reduction in use of disposables
- Expanded composting to include post-consumer food waste



## Earth Week

### Because one day is not nearly enough!

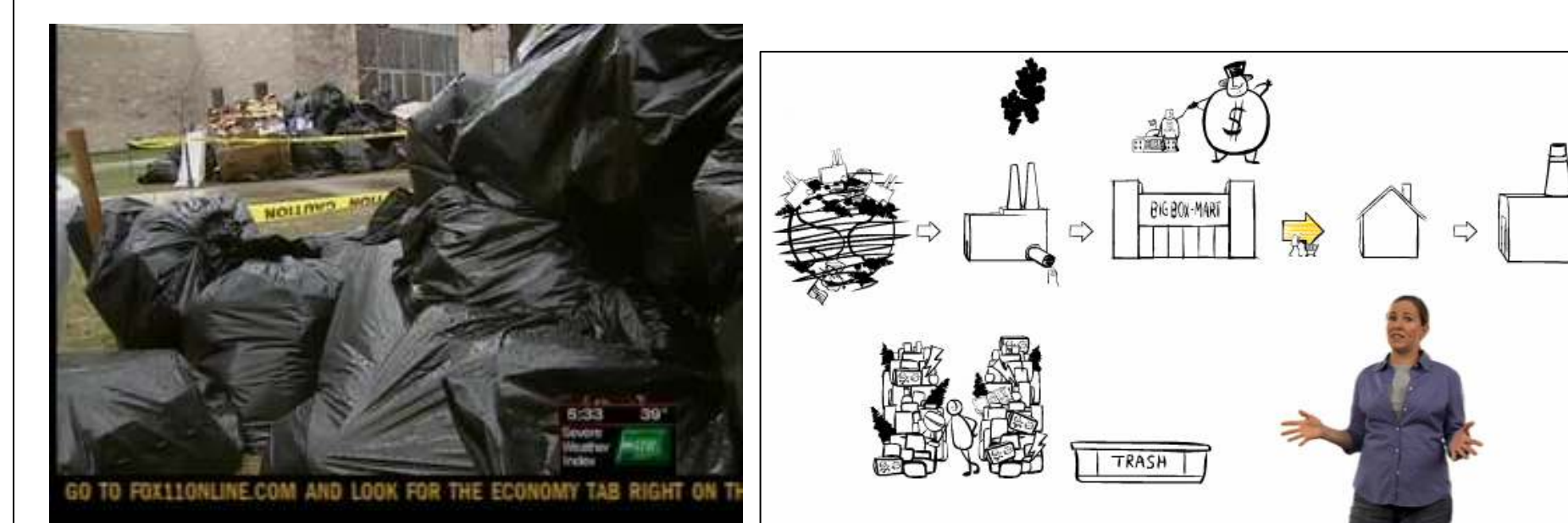
One of our goals is to bring to the campus and broader Appleton community events and activities that will "cultivate habits of mind and dispositions that lead to care of the Earth." Each day of Earth Week was given a theme, with speakers, events, and activities. Themes and events were chosen to reach across and beyond the traditional "Environmental Studies" disciplines.

### SPRING OF 2009 :

- **Food and Agriculture**
  - SLUG open house - hands on gardening in the student run sustainable garden
  - "Food vs. Agricultural Biotechnology" – Andrew McCann
  - "Rich Food For All People" – Will Allen (postponed to May, 2009)
- **Waste Reduction**
  - Mt. Trashmore!
    - Custodial staff collected a days worth garbage and recycling and piled it on the Main Hall quad - garnering a visit from the TV News.
    - "Where Does your waste go?"
    - Local solid waste director presented to the Appleton Community on the move to single stream recycling
    - Annie Leonard - "The Story of Stuff"



Will Allen of "Growing Power" and student SLUG leaders listen for worms as Will discusses the finer points of compost.



- **Global Climate Change**
  - "Climate Feedbacks and Greenhouse Gas Emissions in Northern Peatlands: Meltdown of the Great White North" Jeffrey White
- **Environmental Art**
  - "Primitive Ways in an Accelerated Time" - Patrick Dougherty, a.k.a. the stick artist
- **Green Music**
  - "Music for Sea and Sky" - The Lawrence University Wind Ensemble
- **Greenfire's Annual Earth Day Extravaganza**



Student art installation inspired by Patrick Dougherty



### ON TAP FOR 2009-2010 :

- Convocation Series
- Earth Week 2010
- Recyclemania
- and more!

## Energy

### HVAC Policy:

Thermostats in all academic, social, and living spaces shall be set at 68F in the heating months and 76F in the cooling months.

### COLLABORATIVE ELEMENTS:

- **Faculty-Staff-Administration**
  - GR Committee crafts policy in collaboration with Director of Facilities Services
  - Draft policy is presented to and endorsed by President's Cabinet
  - Broader faculty input results in minor changes
  - Put into effect in April 2009.
- **Faculty-Staff-Student**
  - LUCC Committee on Environmental Responsibility drafts language in collaboration with Green Roots
  - LUCC CER presents policy to LUCC Committee on Student Welfare
  - Policy is adopted in May 2009

### Anticipated Results:

- 8% reduction in energy consumption
  - Savings of ~\$150,000
  - Reduction in CO2 emissions of 3400 metric tonnes

### Future Work:

- Explore diurnal and weekend cycling of temperatures
- Continued upgrade of HVAC systems
- Apply demonstrated monetary savings towards...

### Alternative Energy:

- **Wind**
  - Student-Faculty-Alumni collaborative project
  - Waiting for results of site assessment
- **Biofuels**
  - Faculty sponsored tutorial for students
  - Formation of biofuel club
    - Looking for facility to house equipment
- **Solar**
  - Student interest w/ faculty support
  - Early planning stages and club formation

## CONCLUSIONS

### Collaborations...

- Increase buy-in by stake holders
  - Increases interest in environmental issues
  - Increases participation
- Provides a sense of community working towards common goal
- Reduces power differentials between faculty-staff-students