

DON'T FORGET TO VOTE



From George, the Chair

National Family Week!!!

The week beginning November 22nd is National Family Week. Since our academic department offers majors in both family studies and social work, it is most appropriate we celebrate National Family Week.

It has been over 25 years since last I served as field supervisor on the Term in Asia. It was a wondrous, learning experience. While my list of lessons learned is long, during National Family Week one particular lesson is worth noting. Each of us who traveled together in Thailand was amazed by the welcoming nature of Thai families. It was often difficult to figure out who was actually linked biologically since familial names like “father”, “mother”, “auntie”, “grandma” were given out so freely. They seemed so thankful for each other and for the little they possessed. No doubt there are many variables to explain such outpouring of love and affection for each other, but I suspect the chief variable was their act of thanks-giving every morning. Each morning when monks would walk through the village or city streets, families would come out of their homes to give them something to eat. I suspect further, many families gave knowing they might not have enough for themselves. In short, I choose to believe a whole culture can be transformed into a “thanks-living” society by simply each morning, offering a gesture of thanks-giving.
See **Geo** pg 2



From Mary, the Director,

We're off to a lovely start to the school year, and I would like to remind us all to take a few minutes each day to appreciate the environment in which we find ourselves working and learning. The grounds crew and the custodial staff keep our land and buildings clean and beautiful... take a moment to thank them when you see them.

New Faces on the Faculty

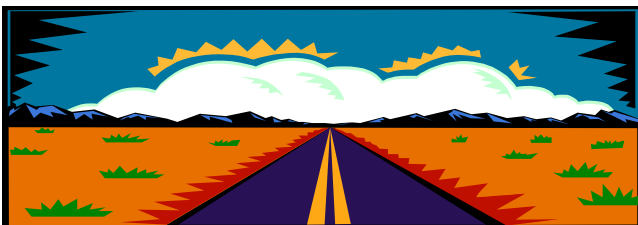
Lots of changes afoot this year, as Naurine continues with her special leave to the Office of Community Life and Diversity and Mary has a grant from the Lilly Vocation Program. We welcome *Melissa Roberts* this fall to teach SW254; Melissa is a graduate of St. Olaf in Psychology and Norwegian and is pursuing a PhD in Social Work at the University of Minnesota while working at Hennepin County. We're delighted she was willing to add St. Olaf teaching to her many accomplishments. We will also be happy to welcome Sarah Ferguson in the spring semester to teach SW 258 and SW 274. Sarah has a Master's Degree in Public Policy from the Humphrey Institute, and has also nearly completed her PhD in Social Work. We are honored to have such fine adjunct faculty with us this year.

Kudos to Deb Clark

Take a minute to look at our new, improved website for the department. Deb has worked hard to update it and give it a user-friendly look and feel. Please check it out and provide us with any feedback you might have to make it even better; we're always working on it. Thanks, Deb!!

Politics and Social Work

It's an intense political season this year, and I assume all social work students and family studies students will exercise your privilege to vote. As our good friend and colleague, Susan Vallem from Wartburg College reminds us, “*clinical without political is hypocritical!*” I want us



to remember the good fortune we have as people living in the United States and urge us to always keep in mind our concomitant responsibility for the welfare of others, in this country and abroad. Politics is always with us, so no matter the outcome of these elections, please stay involved!!

Upcoming Events

See notices elsewhere in the newsletter about SOSW club and a departmental party at Professor Lennox' home to celebrate National Family Week.

From Naurine, The Field Coordinator



In Fall, 2004, thirteen social work majors are fulfilling practicum requirements in community agencies. They assist clients while practicing the skills they have been studying. They are supervised by social workers in a wide variety of programs in and around Northfield and Faribault and in Minneapolis/St. Paul. They began full time (40 hours per week) practice in the agencies on October 5. On Monday evenings throughout the semester they participate in an integrative seminar on campus. The agencies hosting St. Olaf social work majors this fall are: Freeport West, Lutheran Social Services Refugee Services/Employment Programs, International Institute of Minnesota, Fairview Ridges Hospital, & Bush Memorial Residential Services–Wilder Foundation (in Minneapolis, St. Paul, and Burnsville), Common Bond Communities–Greenvale Place, the Alternative Learning Center–Northfield Public Schools, the Community Action Center, & Northfield Hospital (in Northfield); Rice County Community Corrections, District One Hospital/Faribault Area Hospice, & Montgomery-Lonsdale Public Schools, and (in and around Faribault). Anna Valento chose to go to New York City to work with Peter's Place, a 24-hr drop in center for homeless persons over age 55, in the Chelsea section of Manhattan. I visited with her and her field instructor, Ciara McElroy, in early October. What an interesting site for practicum! Anna learned about Peter's Place from Tom Balsley, who had done an interim internship there, who learned about it from social work program alums attending Columbia University School of Social Work. We are grateful for this network of connections between New York City and St. Olaf College.

Naurine Lennox continues as Faculty Diversity Education Coordinator. Last year and this Naurine is helping the faculty "address the on-going challenge of diversity education" as a member of the Community Life and Diversity team. Her role includes facilitating "interaction and collaboration with faculty in addressing and incorporating various aspects of diversity across the curriculum."

Eida Berrio and she are responsible for the new Undergraduate Scholars Program. Twenty-five students have been accepted to this program that encourages underclassmen, particularly, to look forward to careers as college professors. This fall two events will be held. Any student is encouraged to attend, whether you are in the program or not.

Saturday, November 6, 2004, in the Viking Theater, 8:30-12:00. An outstanding panel of persons from graduate schools around the country will talk about their desires to teach at the college level. These are persons from diverse backgrounds, typically underrepresented among college faculties.

Thursday, Dec. 9, 5:30-7:30 pm a dialogue with Dennis Hidalgo, Professor of History who is spending a year at St. Olaf through the Program for a Stronger Minority Presence at Liberal Arts College.

con't pg 1 Geo

Thanks-living is what family studies and social work are all about. It will soon be National Family Week and therefore, a time to pause, to offer our thanks for one another, to remember our commitment to serve others, and to celebrate our differences as well as our similarities.

Penn State Recruits Family Studies' Majors

Last month Dr. Craig Edelbrock, Director of Graduate Programs, College of Human Development and Family Studies, Pennsylvania State University, came to campus to meet with family studies' majors interested in Ph.D. programs. While most of our majors are focused on careers related to marital and family therapy rather than research and/or college teaching, approximately twenty students came to listen to Dr. Edelbrock. Dr. Edelbrock is of the opinion that the best students come from institutions whose curriculum reflects both a strong liberal arts background and a program concentrating on familial issues and concerns. Impressed with the academic performance of two of our recent graduates (Megan Patrick '03 and Annie Rissman '04), Dr. Edelbrock came to St. Olaf to interview both students and faculty members. Upon leaving, he reported to Associate Dean of the Social Science Faculty Steve Soderlind, that he thought our department was on the threshold of becoming nationally recognized as a superb place to recruit promising graduate students.

Our family studies majors were also impressed with Dr. Edelbrock and the academic program at Penn State's College of Human Development and Family Studies. Students were very interested in learning that if accepted into the program, there would be no tuition costs the

entire four years, plus health and dental benefits, and small stipends during the summer months.

Pre-registration process

Pre-registration is Nov. 1 – Nov. 4
Beginning at 8: 00 Monday and going until 5:00 pm Thursday.
Absolute deadline not exception will be made.



You must be a declared Family Studies or Social Work major in order to pre-register for the following classes.

FS 242 – FS or SW Majors
So/An 121 A or B – FS or SW majors
(SW majors must take 121)
(FS majors must take either 121 or 126 when offered)
So/An 128 A or B – FS majors
(to satisfy Cross-cultural course)
So/An 244 A or B – FS or SW majors

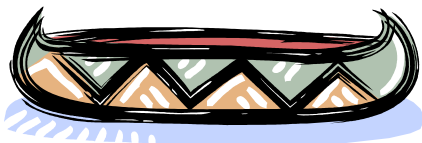
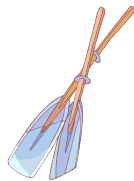
For these courses contact me at clarkd@stolaf.edu with name and ID # and choice of section.

Psych 125 A/B Principles:Psych FS or SW majors
Psych 241 Developmental Psych FS or SW majors
Psych 231 Research Methods FS majors
Psych 375 Psych Of Counseling FS majors

For these courses you will fill out the online form for Darla Frandrup and she will do the follow up. **Her deadline is 4:00 pm Thursday November 4**, please follow it.

SOS our Social Work Club

So far this year, the ST. Olaf Social Workers (SOSW) has not gotten very active. Students have put forth some good ideas, however, so if you are interested in being a leader or co-leader of this group, please email me at carlsen@stolaf.edu or call me at x3136.



FYI

Lynn Overvoorde and her family are expecting their baby around Thanksgiving. Lynn is currently practicing at Mental Health Collaborative in Minneapolis. Naurine and Lynn presented at MCSWE Fall Retreat, on September 27.

Community research on behalf of Latino students and their families: a culturally responsive service learning model

Keep your eyes open for updates.

Party Page

National Family Week Celebration

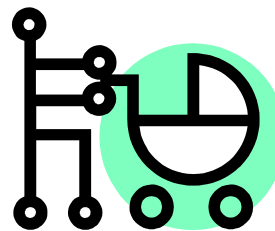
Naurine Lennox home
924 Ivanhoe Dr.
November 18, 2004
5:30 – 7:30 pm

Pasta Pack out will be the meal, faculty and staff will provide the dessert because we know how much you look forward to home cooking. Email clarkd@stolaf.edu by Nov. 12 with your café number.

Fieldwork Instructor Recognition Reception

December 9th
Buntrock Commons 142
4:00 – 5:00 pm

We will serve Hors D'Oeuvres, at the reception. You are each encouraged to invite your Fieldwork Instructor to have the evening meal with you, tickets for them will be provided. I will send you a printed invitation to give to your instructors. By Dec 1, you will need to contact me with a count and whether or not they will be joining you for dinner. I will order the dinner tickets. I can be reached at clarkd@stolaf.edu



Congratulations to Simone Lott, '05 Tionna Denay Calaway was born in August mom and baby are doing fine!

Family Studies
Departmental Distinction Process

Distinction in Family Studies

2005 Family Studies graduates must request consideration for distinction **in writing to the Chair of the Department by February 16, 2005.**

Criteria for Distinction in Family Studies include:

1. An overall GPA of 3.0 and a GPA for courses in Family Studies of 3.5 or better.
2. Completion of **one** of the following by March 15, 2005:
 - a. independent study, research, or internship project dealing with an issue concerning marriage and family,
 - b. or an extensive reworking of a previous scholarly paper on a topic from a family studies class.

A committee of faculty within the Dept. of Family and Social Service will review the project, study or paper, and then interview the candidate about the work for distinction. A decision will be made by April 20, 2005. If you have any questions, please feel free to speak with me.

Social Work
Departmental Distinction Process

Distinction in Social Work

2005 Social Work graduates must request consideration for distinction **in writing to the Program Director by February 16, 2005.**

Criteria for Distinction in Social Work include:

1. An overall GPA of 3.0 or better and a GPA for courses in the Social Work Program of 3.5 or better;
 2. Completion of one of the following by March 15, 2005:
 - a. independent study, research, or internship **in addition** to the regular curricular requirements and related to social welfare, social policy, or social work practice. It may be a course (e.g., SW 298 or SW 398) or may be an independent, not-for-credit effort that is presented in a formal manner.
- OR**
- b. an extensive reworking of a previous scholarly paper on a topic directly related to social work (e.g. this could be a project completed for SW246, SW258, SW261 or SW274).

A committee of faculty, a field instructor, and/or a social work alum will review the project(s) and interview the candidate(s) about the work for distinction. A decision will be made by April 20, 2005. Please see me with any questions.

Highlights

Pre-registration: Information inside

Don't Forget to Vote!!