



# Public Safety Newsletter

St. Olaf College

May 1, 2009

Volume 1, Issue 1

## This Month:

- **Public Safety Newsletter Launched**
- **Congratulations Class of 2009!**
- **Public Safety's Green Efforts**
- **May is Bicycle Safety Month**

Do you have a question or concern you would like to see addressed in a future newsletter?

E-Mail us at:  
[dpsnews@stolaf.edu](mailto:dpsnews@stolaf.edu)

**24-Hour Public Safety Dispatch:**  
**On-Campus: 3666**  
**Off-Campus: (507)-786-3666**

**Police, Fire & Ambulance 9-911**  
**(Emergency)**

**Northfield Police 9-645-4477**  
**(Non-Emergency)**

### Other Important Numbers:

Counseling Center	3062
Dean of Students	3023
Health Services	3063
Parking Office	2972
Safe Ride	3666
Sexual Assault Resource Network (SARN)	3777
Hope Center	1-800-607-2330

## Public Safety Newsletter Launched!

Welcome to the launch of the St. Olaf Public Safety Newsletter! It will be available monthly on our web page at <http://www.stolaf.edu/stulife/safety/newsletter>.

Public Safety officers strive to create and maintain a safe and secure living, learning and working environment for the entire campus. We strongly believe that a well informed community is a safer one, and our goal with this newsletter is to educate and inform the college as a whole. In addition to this newsletter, summaries of Public Safety incidents are published in the Manitou Messenger on a weekly basis. A daily crime log is also available for public review in the Parking Office during normal



office hours. When serious crimes occur on college property, we will issue a crime alert to the campus community via e-mail, and post copies in the Public Safety Office. You will also find a link on our web page to the Clery Act. The Clery Act is an annual report that discusses public safety policies, campus policies and includes crime statistics for the previous three calendar years. Through these efforts, we believe our community will be well informed and can take the necessary measures to promote a safe environment for all.

So sit back and enjoy our premiere issue, and we look forward to sharing future newsletters with you!



## Congratulations Class of 2009!!

Commencement is one of the most exciting times on campus and Public Safety would like it to be a safe and memorable time for all graduates and their families.

If the ceremony is held outside, consider bringing bottled water and umbrellas to help protect from the sun. If inside, handheld fans are strongly encouraged.

There will be emergency medical staff available at either end of the bleachers, so feel free to contact them if you have a health related concern for someone in your party.

There will be handicap parking near the ceremony site. It does, however, fill up early, so consider having grandparents/etc. park at Buntrock Commons and ride the campus shuttles to the site.

## Help Public Safety be GREEN!!

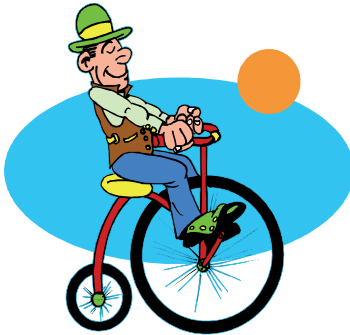
Public Safety officers frequently finds lights left on in unoccupied classrooms in the evenings. We do turn them off and would ask that all staff/faculty/students help us in this endeavor to conserve energy and promote our campus sustainability!



## May is Bicycle Safety Month

**St. Olaf Bicycle Policy** (<http://www.stolaf.edu/stulife/thebook/general/bicycle.html>)

**1. All bicycles on campus must be registered** with the parking office and display a current St. Olaf bicycle license. **2. All bicycle registrations will be free of charge.** Any bicycle found on St. Olaf property without a current permit will be impounded. Impoundment will include cutting the lock, if necessary. **3. All bikes must be parked in bike racks** or designated areas to avoid interfering with vehicle and pedestrian traffic. Bicycles must not be brought into any campus buildings. **4. Impounded bicycles may** be claimed by calling public safety at ext. 3770. Any bicycle not claimed within 60 days will become property of public safety and subject to sale at an annual bicycle sale.



**State of Minnesota Bicycle Laws** (<http://www.dot.state.mn.us/bike/bikesafety.html>)

### Eight Basic Rules of the Road

1. Bicycles may ride on all Minnesota roads, except where restricted.
2. Bicyclists should ride on the road, and must ride in the same direction as traffic.
3. Motorists must at all times maintain a three-foot clearance when passing a bicyclist.
4. Bicyclists must obey all traffic control signs and signals, just as motorists.
5. Motorists and bicyclists must yield to the right-of-way to each other.
6. Bicyclists should signal their turns and should ride in a predictable manner.
7. Lights and reflectors are required at night.
8. Bicyclists should always wear helmets.

**Do wear a helmet. Do use lights and reflectors for night operation.**  
**Do Not wear flip flops, loose sandals, or bare feet.**

## Looking For Good Drivers

**Attention Students:** Public Safety is looking for Safe Ride Drivers for the 2009-2010 academic year. If you have a Work Study award, are at least 20 years of age, and have a good driving history, please contact Captain Pam Hoffmann at [hoffmanp@stolaf.edu](mailto:hoffmanp@stolaf.edu) for more information.



## Important Dates for May:

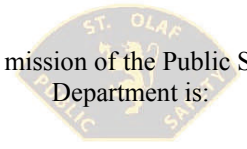
May 1	Honors Day
May 10	Mothers Day
May 10-16	National Police Week
May 13	Last Day of Classes
May 14	Reading Day
May 15-20	Final Exams
May 17-23	National EMS Week
May 22-24	Reunion Weekend
May 24	Baccalaureate/Commencement
May 25	Memorial Day

## Mission Statement

Department of Public Safety

### St. Olaf College

The mission of the Public Safety Department is:



"To support and advance the educational objectives of St. Olaf College by fostering and maintaining a safe, secure and stable environment for living, learning, and working."

### Coming in June:

- Summer Session Begins
- National Safety Month
- National Sun Safety Week

**Did you know?**

You can legally park for 15 (fifteen) minutes in campus fire lanes WITH your flashers on to load/unload your vehicle. Parked in fire lanes beyond that time, or not having your flashers on, you can expect to receive a parking citation in the amount of \$50.00 as well possibly being towed, at your expense.

Please visit our web sites at:  
<http://www.stolaf.edu/stulife/safety>  
<http://www.stolaf.edu/stulife/parking>