

# ST. OLAF CHOIR

ANTON ARMSTRONG · CONDUCTOR



WINTER TOUR 2023

# ST. OLAF CHOIR 2022-23

ANTON ARMSTRONG | CONDUCTOR

JEAN PARISH | MANAGER

## SOPRANO I

- Emma Auby, *Monona, Wis.*  
*music education*
- Cate Crockett, *Rochester, Minn.*  
*nursing*
- Rachel Du Four, *Fair Oaks, Calif.*  
*undeclared major*
- ^ Kayli Keim, *Millersburg, Ohio*  
*economics, music*
- Abigail Kelley-Lanser, *Hopkinton, Mass.*  
*church music*
- Ileana Sanchez, *Woodbury, Minn.*  
*Spanish*
- Meggie Snyder, *Spring Lake, Mich.*  
*music*
- Meredith Wallace, *New York, N.Y.*  
*music education*
- Meredith Williams, *Centennial, Colo.*  
*mathematics*

## SOPRANO II

- India Bock, *Seattle, Wash.*  
*gender and sexuality studies, history,*  
*political science*
- Claire Bouma, *Omaha, Neb.*  
*music education*
- Abigail Carter, *Longmont, Colo.*  
*church music*
- Taylor Dirks, *Dekalb, Ill.*  
*music education*
- Abby Engbrecht, *Faribault, Minn.*  
*mathematics*
- \* Caroline Flaten, *Prior Lake, Minn.*  
*music performance, Norwegian*
- Lydia Hill, *Ankeny, Iowa*  
*French*

## ALTO I

- Olivia Inberg, *Magnolia, Texas*  
*music education*
- Grace Knowlan, *Stillwater, Minn.*  
*undeclared major*
- Abigail Lundeen, *Golden, Colo.*  
*music*
- \* Josie Lynn, *Mechanicsville, Va.*  
*music education*
- Hannah Paulson, *Woodstock, Ill.*  
*music education*
- Ella Pike, *Lincoln, Neb.*  
*music performance*
- Emma Silvestri, *Lawrence, Kan.*  
*music education*
- Sarah Teske, *Onalaska, Wis.*  
*mathematics*
- Zoe Vorbach, *Marshall, Minn.*  
*music education*

## ALTO II

- Maria Coughlan, *St. Paul, Minn.*  
*music*
- Jan-Rose Davis, *Cold Spring, Minn.*  
*race and ethnic studies,*  
*sociology/anthropology*
- Rachel Milt, *Winchester, Mass.*  
*nursing*
- Natalie Robuck, *Columbia, Mo.*  
*music education*
- Sophia Sawoski, *Los Angeles, Calif.*  
*music*
- Alexys Sayegh, *Corona, Calif.*  
*music education*
- Tove Trelstad-Larsen, *Tacoma, Wash.*  
*gender and sexuality studies, religion*
- Julie Xiong, *Stillwater, Minn.*  
*undeclared major*

## TENOR I

- Logan Cyr, *Minneapolis, Minn.*  
*chemistry*
- William Fecko, *State College, Pa.*  
*music education*
- Cullen Hauck, *Northfield, Minn.*  
*biology*
- Mark Jesmer, *Dekalb, Ill.*  
*music performance*
- Thomas Krueger, *Lakeville, Minn.*  
*music education*
- Thomas McCarthy, *Albuquerque, N.M.*  
*music*
- Noah Smith, *Glasgow, Ky.*  
*music*
- Jacob Vidervol, *Andover, Minn.*  
*music education*

## TENOR II

- Thomas Garcia, *Phoenix, Ariz.*  
*philosophy*
- Caleb Griffiths, *Edina, Minn.*  
*mathematics*
- Aidan Kocur, *Fort Worth, Texas*  
*music*
- ^ Aaron Looney, *Bridgewater, Va.*  
*church music*
- Rand Matheson, *St. Michael, Minn.*  
*music education*
- Jake Olson, *Lake Elmo, Minn.*  
*music education*
- Henry Vermeer, *Des Moines, Iowa*  
*music education*
- \* Blake Wieseler, *Yankton, S.D.*  
*education, music, Spanish*

## BASS I

- Paul Freelove, *Pillager, Minn.*  
*music*
- Ethan Jones, *Alna, Maine*  
*computer science, music*
- Aiden Kocian, *League City, Texas*  
*music*
- Christopher Kopits, *Princeton, N.J.*  
*music*
- Seng Lor, *Maplewood, Minn.*  
*music education*
- Chris Martin, *Berkeley, Calif.*  
*church music, music composition*
- William McIntyre, *Faribault, Minn.*  
*sociology/anthropology, theater*
- Oliver Steissberg, *Davis, Calif.*  
*music performance*

## BASS II

- Jayden Browne, *Lancaster, Pa.*  
*elective studies*
- Peter Hoffman, *Walla Walla, Wash.*  
*mathematics*
- Murali Meyer, *San Francisco, Calif.*  
*mathematics, music*
- Andrew Nelson, *Maple Grove, Minn.*  
*Asian studies, economics*
- Nicholas Rhodes, *Kennett Square, Pa.*  
*music*
- \*• Jack Slavik, *Andover, Minn.*  
*music education*
- Aedan Thornton, *Maple Grove, Minn.*  
*computer science*
- Nicholas Van Loh, *Duluth, Minn.*  
*music education*

## \* Section leader

- Officer
- ^ Manager
- Librarian
- Percussion
- Piano

## COLLEGE RELATIONS AND MUSIC ORGANIZATIONS

Michael Kyle '85, *vice president for enrollment and college relations*  
Jean Parish '88, *director of college relations for music organizations*  
Terra Widdifield '95, *associate director of music organizations*  
Connor Boritzke Smith, *assistant director of music organizations*  
*for audience development*  
Sarah Gingerich '11, *assistant director of music organizations for*  
*project management*  
Jonathan Kopplin, *associate librarian for ensembles and performing rights*  
Emma Jenks '22, *coordinator of music organizations*  
Gabbie Holtzman '21, *ticketing coordinator*

## FINE ARTS ADMISSIONS

Molly Boes Ganza '08, *associate dean of fine arts recruitment*

# PROGRAM

## — I. WE SING OF SACRIFICE AND RESURRECTION —

† CŒNANTIBUS AUTEM ILLIS	Juan de Lienas (c. 1620–1660)
(WITHOUT PAUSE)	
THE 23 <sup>RD</sup> PSALM	Bobby McFerrin (b. 1950)
AGNUS DEI	Ernesto Herrera (b. 1989)
ICH BIN DIE AUFERSTEHUNG UND DAS LEBEN (SWV 464)	Heinrich Schütz (1585–1672)

## — II. WE SING OF LOVE, LOSS, AND REDEMPTION —

† THE SONG OF PEACE	Olaf C. Christiansen '25 (1901–1984)
VALEDICTION	David Conte (b. 1955)
THE SACRED VEIL	Eric Whitacre (b. 1970)
Dear Friends; You Rise, I Fall; Child of Wonder	
SET ME AS A SEAL	Margaret Burk '13 (b. 1990)
EVENING MEAL	Ralph M. Johnson '78 (b. 1955)
† THE EXALTATION OF CHRIST	Charles Forsberg (b. 1942)

## — INTERMISSION —

## — III. WE SING FOR CARE AND COMPASSION OF OUR NEIGHBOR —

WITH WHAT SHALL I COME?	Rosephanye Powell (b. 1962)
† I SAW A STRANGER YESTER'EEN	Jacob Avshalomov (1919–2013)
† CAROL OF THE STRANGER	Abbie Betinis '01 (b. 1980)
THE STRANGER	Kim André Arnesen (b. 1980)
Do Not Neglect; Let Us Build a House	
WHEN MEMORY FADES	Jayne Southwick Cool (b. 1947)
	arr. Eric Nelson (b. 1959)
† MOVEMENT III (PSALM 50)	F. Melius Christiansen (1871–1955)

## — IV. WE SING OF HOPE, JOY, AND LIGHT —

WHAT A WONDERFUL WORLD	George David Weiss (1921–2010) and Bob Thiele (1922–1996)
	arr. René Clausen '74 (b. 1953)
I SING BECAUSE I'M HAPPY	Charles H. Gabriel (b. 1856–1932)
	arr. Kenneth Paden (b. 1953) / adapt. Rollo Dilworth (b. 1970)
† THIS LITTLE LIGHT OF MINE	arr. Moses G. Hogan Jr. (1957–2003)
WAY OVER IN BEULAH LAN'	arr. Stacy Gibbs (b. 1962)

## — OPTIONAL SELECTION —

† BEAUTIFUL SAVIOR	arr. F. Melius Christiansen (1871–1955)
--------------------	---

† Available on St. Olaf Records



# About the Conductor

ANTON ARMSTRONG '78

The 2022 season is Anton Armstrong's 33<sup>rd</sup> year with the St. Olaf Choir, marking him the longest tenured conductor in the ensemble's storied history. Armstrong, who is the Tosdal Professor of Music and conductor of the St. Olaf Choir, has led the ensemble since 1990. Under his leadership and vision, the choir has remained a pacesetter in performing a varied program that remains committed to music of the sacred realm while welcoming new and multicultural perspectives from composers around the world.

"We present a program that is transformational to the listener," Armstrong says. "We achieve a very distinctive presentation of musical literature that goes beyond entertainment to challenge the listener in body, mind, spirit, and voice." He views music as a bridge to commonalities among people, regardless of language. "Music creates community for people — we have much more in common than divides us," he says.

Armstrong sees his conducting as a way to live the values of St. Olaf College, particularly those of excellence, inclusion, and global citizenship. "The past 33 years wouldn't have been possible without the strong support we've received from St. Olaf for our artistic vision," he says. He also credits the choir's continuity of leadership — having had only four conductors in its 110-year history — with laying the groundwork that has allowed him to "blow the door open" on the ensemble's repertoire by incorporating more music from Africa, Latin America, Asia, and the Pacific Rim.

In addition to conducting the St. Olaf Choir and the Collegiate Chorale, Armstrong teaches conducting, choral pedagogy, and vocal performance courses. He is the artistic director of the St. Olaf Christmas Festival, an event featuring more than 500 student musicians.

Armstrong previously taught at Calvin University and is a graduate of the American Boychoir School, St. Olaf College, the University of Illinois, and Michigan State University. His honors include the 2006 Robert Frost Cherry Award for Great Teaching from Baylor University, and a Distinguished Alumni Award from Michigan State. In June 2013, Armstrong received the Saltzman Award from the Oregon Bach Festival. The festival's highest honor, this award is bestowed upon individuals who have provided exceptional levels of leadership to the organization. In 2014, the St. Olaf Choir and Armstrong received a regional Emmy® Award for the 2013 PBS television program *Christmas in Norway with the St. Olaf Choir*. Anton Armstrong was named an Honorary Life Member of the National Collegiate Choral Organization in the fall of 2021. Honorary Life Members are recognized as members of the choral profession who have devoted their life to the enhancement and artistic growth of the choral art. The award recognizes those leaders in our profession who have mentored young conductors, inspired singers, supported music educators in the arts, and shared their talents and gifts in the United States and abroad.

Armstrong is committed to sharing the experience of making truly beautiful choral art with others, and his work has influenced thousands of singers. He leads choral workshops and festivals throughout the world and is a frequent guest conductor of choirs with singers ranging in age from young children to senior-aged choristers. He is the founding music director of the Oregon Bach Festival's Stangeland Family Youth Choral Academy. In February 2022, he served as conductor of the Kansas SATB All State Choir. He is editor of the Anton Armstrong Multicultural Series of Earthsong Publications and co-editor of the

St. Olaf Choral Series, two endeavors that bring new music to choirs worldwide. In June 2022, he assumed the position of Chair of the National Board of Chorus America.

In September 2022, Dr. Armstrong received the Distinguished Legacy Award from the College of Fine and Applied Arts at the University of Illinois at Urbana-Champaign and the 2022 50 Over 50 Honoree in the Arts Award from AARP-Minnesota and the Pollen Midwest

During the 2022–23 season, Anton Armstrong will serve as conductor of the 2022 Montana All State Choir and the 2023 North Dakota All State Choir. Additionally, he will lead choral festivals at Carnegie Hall, New York (NY), Orchestra Hall (Chicago, IL), Meyerson Symphony Hall (Dallas, TX), and Baltimore, MD, concluding with an international choral festival in Assisi and Rome, Italy in June 2023. He will also serve as a guest lecturer and clinician at Biola University (CA), Azusa Pacific University (CA), and the Interlochen Arts Academy (MI).

Armstrong's influence extends well beyond the United States. He has shared his choral knowledge and conducting prowess in locations from New Zealand to Israel and South America to Scandinavia and at such events as the World Symposium on Choral Music. Armstrong was the guest conductor of the Republic of Korea's 2018 Jeju Island International Choir Festival and Symposium and a member of the

Choral Jury for the first Tokyo International Choir Competition in Japan. Most recently, he conducted the Indonesia Youth Choir and was a member of the Choral Jury for the 8th Bali International Choir Festival in Bali, Indonesia. He also served as an adjudicator for the 2021 Busan International Choral Festival in Busan, South Korea.

These international experiences greatly shape the repertoire performed by the St. Olaf Choir, further expanding a world of music for the singers. "We are constantly examining repertoire from a global perspective, but the core of our being is still a proclamation of the Christian Gospel — a message of faith, love, and truth," Armstrong says. "I want the power of music — that Spirit — to transform those who perform and those who will hear the message. For me, that is a very powerful reason for doing what we do."

In many concerts on this tour, Dr. Armstrong is wearing a *hanbok*, which is a traditional formal dress from Korea. It was given as a gift by his colleague and friend, Dr. Shin-Hwa Park, professor of choral music at Ewha Womans University, South Korea, marking their friendship and appreciation for Dr. Armstrong's considerable work with the South Korean choral community since 2011. Dr. Armstrong wears this as a sign of respect and gratitude for Dr. Shin-Hwa Park and the wonderful South Korean singers who have impacted his life.

Charles Gray is professor of music at St. Olaf College, where he is in his 39<sup>th</sup> year of teaching violin, viola, and chamber music. He was a regular performer with the Minnesota Orchestra from 1991–2010. Professor Gray is the director of the St. Olaf Summer Music Academy and has been named honored as "Master string teacher of the year in MN" by the American String Teachers Association. He attended Wheaton College, the University of Michigan, and the Eastman School of Music. His major teachers include Paul Makanowitzky, Sylvia Rosenberg, Atar Arad, and members of the Cleveland Quartet. Gray was violist of the Casella String Quartet, winner of the Cleveland Quartet Competition, and the top prize at the Fischhoff Chamber Music Competition.

He has performed as a solo recitalist at the Ravinia Festival in Chicago and the Aspen, Steamboat Springs, and Breckenridge Music Festivals in Colorado. He has given solo performances at the National American Choral Directors and National American Guild of Organists conventions and has appeared numerous times as violin soloist on NPR's *Performance Today*. Mr. Gray often tours with the St. Olaf Choir and has performed with them more than 375 times as violin/viola soloist. He often serves as a string judge at important national competitions, including MMTA (March 2022) and the Chicago Symphony Young Artist Competition (January 2023).



## I. WE SING OF SACRIFICE AND RESURRECTION

### CŒNANTIBUS AUTEM ILLIS

*Juan de Lienas (c. 1620–60)*  
(Neil A. Kjos Music Company)

SUNG IN LATIN

Cœnantibus autem illis,  
*As they were eating,*  
Accipit Jesus panem  
*Jesus took bread*  
Et benedixit ac fregit,  
*And blessed it and broke it,*  
Dedit que discipulis suis:  
*Saying to his disciples:*  
Accipite, et manducate:  
*“Take and eat it:*  
Hoc est enim corpus meum.  
*This is my body.”*

— *Matthew 26:26*

©1996 Neil A. Kjos Music Company, San Diego, California USA International Copyright Secured. All rights reserved. Reprinted with permission 2022 - [www.kjos.com](http://www.kjos.com)

(WITHOUT PAUSE)

### THE 23<sup>RD</sup> PSALM

*Bobby McFerrin (b. 1950)*  
(Hal Leonard)

The Lord is my shepherd, I have all I need,  
She makes me lie down in green meadows.  
Beside the still waters, She will lead.  
She restores my soul, She rights my wrongs,  
She leads me in the path of good things,  
And fills my heart with songs.

Even though I walk through a dark and dreary land,  
There is nothing that can shake me,  
She has said She won't forsake me, I'm in her hand.  
She sets a table before me in the presence of my foes,  
She anoints my head with oil,  
And my cup overflows.

Surely goodness and kindness will follow me  
All the days of my life,  
And I will live in Her house forever and ever.  
Glory be to our Mother and Daughter  
And to the Holy of Holies.  
As it was in the beginning, is now and ever shall be,  
World without end. Amen

— *Psalm 23; trans. Dan Stolper*

Copyright © 1990 Prob Noblem Music  
International Copyright Secured All Rights Reserved  
Reprinted by permission of Hal Leonard LLC

### AGNUS DEI

*Ernesto Herrera (b. 1989)*  
(Mark Foster)

SUNG IN LATIN

Agnus Dei qui tollis peccata mundi  
*Lamb of God, who takes away the sins of the world,*  
miserere nobis  
*have mercy on us.*  
Dona nobis pacem.  
*Grant us peace.*

— *Traditional Latin text*

Copyright © 2022 by HAL LEONARD LLC  
International Copyright Secured All Rights Reserved  
Reprinted by permission of Hal Leonard LLC

### ICH BIN DIE AUFERSTEHUNG UND DAS LEBEN (SWV 464)

*Heinrich Schütz (1585–1672)*  
(Choral Music Public Domain)

SUNG IN GERMAN

Ich bin die Auferstehung und das Leben.  
*I am the resurrection and the life.*  
Wer an mich glaubet, der wird leben, ob er gleich stürbe;  
*Those who believe in me, though they perish,*  
*yet shall they live;*  
Und wer da lebet und glaubet an mich  
*And those who live and believe in me*  
Der wird nimmermehr, nimmermehr sterben.  
*They shall nevermore, nevermore die.*

— *John 11:25–26*

## II. WE SING OF LOVE, LOSS, AND REDEMPTION

### THE SONG OF PEACE

*Olaf C. Christiansen '25 (1901–1984)*  
(Neil A. Kjos Music Company)

The heavens opened wide one night  
To let the angels through,  
Who sang for all, the “Song of Peace”  
That only heaven knew.  
Though centuries have measured time,  
with each unfolding year,  
The song still lives in human hearts  
To bring new hope, new cheer.  
We seek with bursting missiled power,  
To pierce the realm of blue,  
But love divine unfurled the skies  
To let a song come through.

— *Lillian Atcherson*

©1949 Neil A. Kjos Music Company, San Diego, California USA International Copyright Secured. All rights reserved. Reprinted with permission 2022 - [www.kjos.com](http://www.kjos.com)

## VALEDICTION

David Conte (b. 1955)

(E. C. Schirmer)

Leave me, O love which reaches but to dust;  
And thou, my mind, aspire to higher things;  
Grow rich in that which never taketh rust,  
Whatever fades but fading pleasure brings.  
Draw in thy beams, and humble all thy might  
To that sweet yoke where lasting freedoms be;  
Which breaks the clouds and opens forth the light,  
That doth both shine and give us sight to see.  
O take fast hold; let that light be thy guide  
On this small course which birth draws out to death,  
And think how evil becometh him to slide,  
Who seeketh heav'n, and comes of heav'nly breath.  
Then farewell, world; thy uttermost I see;  
Eternal Love, maintain thy life in me.

— Sir Philip Sidney

## THE SACRED VEIL

Eric Whitacre (b. 1970)

(Hal Leonard)

X. Dear Friends

XI. You Rise, I Fall

XII. Child of Wonder

Charles Gray, *viola*

Charles Anthony Silvestri writes:

*The Sacred Veil* tells the love story of poet Silvestri and his late wife, Julie. The early movements follow their deepening relationship...then, Julie was diagnosed with ovarian cancer. The texts turn darker, as Julie struggles to process her diagnosis, the effects of treatment, and the heart-breaking progression of her disease. The last three movements of the work are presented in this program. In “Dear Friends” (presented here in narration), Julie asks her friends and family to pray for a miracle. This plea is followed by “You Rise, I Fall.” As Julie passes into eternity, her husband is left behind to grieve and to raise their children alone. The final movement, “Child of Wonder” (with text by Whitacre), is both a welcoming of Julie’s spirit across the veil into eternity, and a benediction, encouraging those of us left behind to set aside the burden of grief.

## X. Dear Friends

*Dear friends: tonight I feel that I must ask you to pray.*

*I just got out of the hospital tonight and I received some bad news. The scan showed that I had numerous liver and peritoneal metastases. My doctor said this meant I most likely had about two months to live.*

*I am now asking you to pray as you have never prayed before. Please don't pray that I will have a peaceful death. Please don't feel pity for me. Just pray hard. Pray that I will be healed in a miraculous, supernatural way. Pray that God will give me wisdom as to what to do next. Fight with me, don't give up on me.*

— Julia Lawrence Silvestri

## XI. You Rise, I Fall

List'ning to your labored breath,  
Your struggle ends as mine begins.  
You rise; I fall.

Fading, yet already gone;  
What calls you I cannot provide.  
You rise; I fall.

Broken, with a heavy hand  
I reach to you, and close your eyes.  
You rise; I fall.

— Charles Anthony Silvestri

## XII. Child of Wonder

Child of wonder  
Child of sky  
Time to end your voyage  
Time to die.

Silent slumber calls you  
Dark and deep  
Child of soft surrender  
Child of sleep.

Child of sorrow  
Child of rain  
There is no tomorrow  
No more pain.

Turn your silvered sail  
Toward the light  
Child of mourning  
Child of night.

Child of iridescence  
Child of dream  
Stars and moons will guide you  
Down the stream.

Stretched on ocean waves  
Exchanging foam  
Welcome home my child  
Welcome home.

— Eric Whitacre

### SET ME AS A SEAL

Margaret Burk '13 (b. 1990)  
(Hal Leonard)

Set me as a seal upon your heart, as a seal upon your arm,  
For love is strong as death.  
Many waters cannot quench love, neither can the floods  
drown it.

— *Song of Solomon 8:6–7*

Copyright © 2022 by HAL LEONARD LLC  
International Copyright Secured All Rights Reserved  
Reprinted by permission of Hal Leonard LLC

### EVENING MEAL

Ralph M. Johnson '78 (b. 1955)  
(Hinshaw Music Inc.)

Charles Gray, violin

*Dedicated to Dr. Anton Armstrong and commissioned  
by the Calvin University Alumni Association in memory  
of Dr. Olaf Christiansen and Dr. Seymour Swets*

O holy food sent down to us from heaven!  
O drink which makes us long for more!  
O food by which we grow to heaven's door!  
O drink that to the dead new life has given!

O food that clings not to the lowly earth,  
But makes us taste that Christ is sweet and good!  
Mild heaven dew, far better than the flood  
That out of the hard rock was once brought forth!

O manna dropping down from God's high hand,  
Cluster of grapes from out the promised land,  
Fill both my heart and mouth with praises sweet!

Climb up my soul, forsake that which you see,  
Thy bridegroom is the only food for thee:  
His blood is truly wine, His flesh is truly meat.  
O holy food sent down to us from heaven.

— *Jacobius Revius; trans. Henrietta Ten Harmsel*

© 2004 Hinshaw Music (administered worldwide by the Fred Bock  
Publishing Group). All Rights reserved. Used with permission.

### THE EXALTATION OF CHRIST

Charles Forsberg (b. 1942)  
(Augsburg Fortress Publishers)

*Dedicated to the St. Olaf Choir and conductor Dr. Kenneth  
Jennings*

Alleluia, Exalted Christ: Deo Gratias!  
Being in the form of God, Humbled as a Servant,  
Obedient unto death, even the death of the cross.  
Glory to the Lord: Deo Gratias!  
Being highly lifted up, Name above ev'ry name.  
Ev'ry knee shall bow. Of things in heaven,  
And things on earth and things under the earth,  
Ev'ry tongue confess: Domine Deus, Jesu Christe.  
Blessing, honor, power and glory to the Lamb  
upon the throne.  
Alleluia, Exalted Christ: Deo Gratias!

— *Philippians 2:7–11*

## — INTERMISSION —

### III. WE SING FOR CARE AND COMPASSION OF OUR NEIGHBOR

#### WITH WHAT SHALL I COME?

Rosephanye Powell (b. 1962)  
(Gentry Publications)

Charles Gray, violin

*Dedicated to the St. Olaf Choir and Anton Armstrong, conduc-  
tor, in honor of his 25<sup>th</sup> anniversary as music director of this  
esteemed ensemble*

With what shall I come before the Lord  
and bow myself before God on High?

Shall I come with burnt off'rings with calves a year old?  
Give my first born for my transgression,  
fruit of my body, for the sin of my soul?  
Will the Lord be pleased with thousands of rams;  
With tens of thousands of rivers of oil?  
With what shall I come?

God has told you, O mortal.  
God has told you what is good;  
to do justice; to love kindness;  
to walk humbly with your God.

With justice I come before the Lord.  
With kindness I come before the Lord.  
With love shall I come before the Lord?  
With these shall I come?

— *Micah 6:6–8*

© Copyright 2007 Gentry Publications (administered worldwide by the Fred  
Bock Publishing Group). All rights reserved. Used by Permission.

ST. OLAF CHOIR

## I SAW A STRANGER YESTER'EEN

Jacob Avshalomov (1919–2013)  
(Highgate Press/Galaxy Music Corporation)

Charles Gray, violin

I saw a stranger yestere'en,  
I put food in the eating place,  
Drink in the drinking place,  
Music in the list'ning place.  
And in the sacred name of the Triune  
He blessed myself and my house,  
My cattle and my dear ones.  
And the lark said in her song,  
Often goes the Christ in the stranger's guise.  
Bless.

— Old Gaelic rune

## CAROL OF THE STRANGER

Abbie Betinis '01 (b. 1980)  
(Abbie Betinis Music Company)

Peace and grace be to this house  
Where all are welcomed in;  
Receive the guest, receive this heart:  
Tell the Stranger, tell.

*Tell the Stranger what you cannot tell  
Those who love you and desire your joy:  
Tell.*

Make tall your walls, make long these beams,  
Who once believed alone;  
Make wide the circle, feed the fire:  
Tell the Silence, tell.

*Tell the Silence what you cannot tell  
Those who love you and desire your joy.  
Tell.*

Blessings be upon this place,  
Let every wound be healed,  
Let every secret, every dream:  
Tell the Angel, tell.

*Tell the Angel what you cannot tell  
Those who love you and desire your joy.  
Tell.*

Peace and grace be to this house,  
All will be returned;  
Let every soul be called your own,  
Tell the Mystery, tell.

*Tell the Mystery what you long to tell  
Those who love you and desire your joy.  
Tell.*

— Michael Dennis Browne

Poem used by kind permission of Michael Dennis Browne

## THE STRANGER

Kim André Arnesen (b. 1980)  
(Boosey and Hawkes)

Do Not Neglect  
Let Us Build A House

Charles Gray, viola

The composer writes:

Both pieces are adapted from the new large-scale work *The Stranger*. "Do Not Neglect" uses a thought-provoking text from the Hebrews — a text so short, but one that makes you stop for a moment and reflect on what it really means to us. "Let Us Build a House," with words by Marty Haugen, is the closing hymn of *The Stranger*. One might think that a large work needs a majestic finale, but sometimes a message feels stronger when we need to listen more carefully and the words are given time and space.

## Do Not Neglect

Do not neglect to show hospitality to strangers,  
for by doing that, some have entertained angels without knowing it.  
Do not neglect hospitality.

— Hebrews 13:2

## Let Us Build a House

Let us build a house where hands  
will reach beyond the wood and stone.  
To heal and strengthen, serve and teach,  
and live the Word they've known.

Here the outcast and the stranger  
bear the image of God's face;  
Let us bring an end to fear and danger:  
All are welcome in this place.

— Marty Haugen

Music © 2019 by Boosey & Hawkes Music Publishers Ltd. is arrangement  
© 2022 by Boosey & Hawkes Music Publishers Ltd. Scripture quotations are  
from the New Revised Standard Version Bible, © 1989 National Council of the  
Churches of Christ.

### WHEN MEMORY FADES

Jayne Southwick Cool (b. 1947)

arr. Eric Nelson (b. 1959)

(Morningstar Music Publishers)

When memory fades and recognition falters,  
When eyes we love grow dim, and minds confused,  
Speak to our souls of love that never alters;  
Speak to our hearts by pain and fear abused.  
O God of life and healing peace,  
Empower us with patient courage, by your grace infused.

As the frailness grows, and youthful strengths diminish,  
In weary arms, which worked their earnest fill.  
Your aging servants labor now to finish...  
Their earthly tasks as fits your mystery's will.  
We grieve their waning, yet rejoice, believing,  
Your arms, unwearied, shall uphold us still.

Within your spirit, goodness lives unfading.  
The past and future mingle into one.  
All joys remain, un-shadowed light pervading.  
No valued deed will ever be undone.  
Your mind enfolds all finite acts and offerings.  
Held in your heart, our deathless life is won.

— Mary Louise Bringle

### MOVEMENT III (PSALM 50)

F. Melius Christiansen (1871–1955)

(Augsburg Fortress)

Whoso offereth praise glorifieth God.  
Who showed to all the salvation of our God.  
Praise God from whom all blessings flow!  
Praise God all creatures here below!  
Praise God above, ye heav'nly host!  
Praise Father, Son, and Holy Ghost!  
Whoso offereth praise glorifieth God.

— Psalm 50:23

## IV. WE SING OF HOPE, JOY, AND LIGHT

### WHAT A WONDERFUL WORLD

George David Weiss and Bob Thiele

arr. René Clausen '74 (b. 1953)

(Hal Leonard)

I see trees of green, red roses too,  
I see them bloom for me and you,  
and I think to myself, "What a wonderful world."

I see skies of blue and clouds of what,  
the bright blessed day, the dark sacred night,  
and I think to myself, "What a wonderful world."

The colors of the rainbow, so pretty in the sky,  
are also on the faces of people goin' by,  
I see friends shakin' hands, saying "How do you do?"  
They're really saying "I love you."

I hear babies cry, I watch them grow,  
they'll learn much more than I'll ever know,  
and I think to myself, "What a wonderful world."

— George David Weiss and Bob Thiele

Copyright © 1967 Range Road Music Inc., Quartet Music and Abilene Music  
Copyright Renewed; All Rights for Range Road Music Inc. Administered by  
Round Hill Carlin, LLC; All Rights for Quartet Music Administered by BMG  
Rights Management (US) LLC; All Rights for Abilene Music Administered by  
Concord Sounds c/o Concord Music Publishing; All Rights Reserved Used by  
Permission; Reprinted by permission of Hal Leonard LLC

### I SING BECAUSE I'M HAPPY

Charles H. Gabriel (1856–1932)

arr. Kenneth Paden (b. 1953)

adapt. Rollo Dilworth (b. 1970)

(Hal Leonard)

I sing because I'm happy.  
I sing because I'm free.  
His eye is on the sparrow,  
and I know He watches me.

I'm so happy, yes I am!  
For His eye is on the sparrow,  
and I know He watches me.

— Civilla D. Martin

Copyright © 1992 by Peertunes, Ltd. and Arasav Music, Inc.  
All Rights Administered by Peertunes, Ltd.  
International Copyright Secured All Rights Reserved  
Reprinted by permission of Hal Leonard LLC

### **THIS LITTLE LIGHT OF MINE**

*African American spiritual*

*arr. Moses G. Hogan Jr. (1957–2003)*

(Hal Leonard)

*Dedicated to the St. Olaf Choir and conductor Dr. Anton  
Armstrong*

This little light of mine, I'm gonna let it shine.  
All through the night, I'm gonna let it shine.  
My God gave it to me,  
I'm gonna let it shine, children.  
My God gave it to me,  
I'm gonna let it shine. Hallelujah, children.  
In my home, all over the world,  
Let it shine.

— *African American spiritual*

Copyright © 2002 by HAL LEONARD CORPORATION  
International Copyright Secured All Rights Reserved  
Reprinted by permission of Hal Leonard LLC

### **WAY OVER IN BEULAH LAN'**

*African American spiritual*

*arr. Stacey V. Gibbs (b. 1962)*

(Gentry Publications)

We gonna have a good, good time  
Way over in Beulah Lan'.  
Oh, when we get way ovuh in Beulah Lan',  
Yes, way ovuh in Beulah Lan'.  
Oh, we gonna have a good, good time  
Oh, Lordy, way ovuh in Beulah Lan'.  
I'm singin', way ovuh in Beulah Lan',  
Yes, way ovuh in Beulah Lan'.

Oh, we gonna walk dem golden streets way ovuh in Beulah Lan'.  
Oh, we gonna drink of de Holy wine way ovuh in Beulah Lan'.

When we get to heaven, chillun, we gonna have a good time  
Oh, yes, way over in Beulah Lan'!

— *African American spiritual*

© Copyright 2007 Gentry Publications (administered worldwide by the Fred Bock  
Publishing Group). All rights reserved. Used by Permission.

### — OPTIONAL SELECTION —

### **BEAUTIFUL SAVIOR**

*Silesian folk tune*

*arr. F. Melius Christiansen (1871–1955)*

(Augsburg Fortress)

# About the St. Olaf Choir

*The renowned St. Olaf Choir has brought its message of hope and faith to audiences around the world for more than a century.*

F. MELIUS CHRISTIANSEN founded the St. Olaf Choir in 1912. He worked to establish the ensemble's standard of excellence and its tradition of bringing music to audiences beyond campus. Christiansen chose spiritually profound music and pushed students to perfect a disciplined, controlled tone that was free of excessive vibrato. That sound — securely in tune, controlled in pitch, smooth in delivery — became the choir's hallmark. Olaf Christiansen '25 succeeded his father as the choir's sole conductor in 1943 and remained deeply committed to retaining the ensemble's purity of tone while exploring new genres and interpretations of music. He added contemporary compositions, more Renaissance music, and American folk hymns to the repertoire of traditional church chorales. In 1953, Kenneth Jennings '50, an alumnus of the choir, joined the music faculty and later became the third conductor of the choir in 1968. Until then, the choir had largely performed a smaller, art-song-like repertoire of motets and anthems. Jennings programmed larger choral works, including oratorios, masses, and passions, as well as more 20th-century pieces, focusing on historically-informed renditions. He retained much of the choir's a cappella repertoire while introducing pieces with instrumental accompaniment, which opened the door for full orchestral collaborations. Jennings also changed the "shape" of the choir by turning students toward the

Anton Armstrong conducts the St. Olaf Choir at Nidaros Cathedral in Trondheim during their tour of Norway in 2019.



audience and using wider and deeper risers. One reviewer noted that the choir now had "a more vibrant, warm tone — a resonant, lively, brilliant sound that rings with vitality and conviction." The choir expanded its global reach with a tour of Asia in celebration of its 75th anniversary in 1986. In 1988, it was one of only five choirs in the world — and the only non-professional one — invited to participate in the Olympic Arts Festival in Seoul, South Korea. When Anton Armstrong '78 took the helm in 1990, his vast knowledge of music and his

ANTON Armstrong is in his 33<sup>rd</sup> year as conductor of the St. Olaf Choir. Kenneth Jennings '50 led the choir for 22 years, from 1968 to 1990. Prior to Jennings, the renowned ensemble had only two other conductors: F. Melius Christiansen (1912–43) and Olaf Christiansen '25 (1941–68).

Each conductor has built upon the choir's foundational ideals of sharing choral music that stirs the souls of listeners. They've worked tirelessly to expand the ensemble's outreach and sound, both globally and culturally, striving to open new doors while respecting the choir's legacy.

Today, the St. Olaf Choir, which celebrated its centennial in 2012, is a leader in the United States and the international music community. The ensemble tours annually throughout the U.S. and extensively worldwide. They collaborate with numerous professional ensembles, and continue to set the pace in choral repertoire and pedagogy.

ability to articulate a vision to singers and audiences alike took the St. Olaf Choir to the next level, adding more flavor to its signature sound and further expanding its repertoire to include music of the Pacific Rim, Africa, and Latin America.

Anton Armstrong '78 is in his 33<sup>rd</sup> year as conductor of the St. Olaf Choir. The renowned ensemble has had only three other conductors: Kenneth Jennings '50 (1968–90), Olaf Christiansen '25 (1941–68), and F. Melius Christiansen (1912–43). Each conductor has built upon the choir's foundational ideals of sharing choral music that stirs the souls of listeners. Over the course of the choir's 111-year history, its outreach and sound has expanded both globally and culturally, and today the St. Olaf Choir is a leader in the worldwide music community. The ensemble tours extensively throughout the United States and abroad, and collaborates with numerous professional ensembles while continuing to set the pace in choral repertoire and pedagogy.

"The choir's palate is broader and more colorful, retaining its characteristic sound while adding a lot of spice," says Armstrong, who notes that members will occasionally sway back and forth during certain pieces, bringing a sense of movement to the ensemble.

The St. Olaf Choir has toured 15 times internationally, engaging capacity audiences in major concert halls worldwide. In 2019, the choir embarked on its eighth tour of Norway, having first visited the country in 1913. In solo concerts and joint performances with the

St. Olaf Orchestra — the first of which was attended by King Harald V — the choir sang new pieces by Norwegian composers, as well as African American spirituals and beloved choral works from masters such as Bach, Mendelssohn, and Grieg. The St. Olaf Choir also recently traveled to Asia in 2017. The choir traveled throughout Japan and South Korea, presenting an eclectic program of regional folksongs, American music, and traditional pieces by Bach and Brahms.

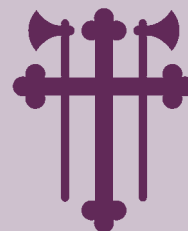
The St. Olaf Choir's many honors include being chosen as American Public Media's sole American representative at the prestigious European Broadcasting Union's Choral Competition, at which it was named one of four finalists. The choir's 2013 PBS Christmas special, filmed in Norway, won two Upper Midwest Regional Emmy® Awards. In 2017, the St. Olaf Choir was among six St. Olaf ensembles invited to perform the St. Olaf Christmas Festival program at the National Conference of the American Choral Directors Association, held at Orchestra Hall in Minneapolis.

While Armstrong embraces the choir's rich legacy and tradition, his eyes are firmly fixed on the future. As technology advances and audiences connect with choral music in new ways, he's confident that the St. Olaf Choir will remain at the forefront of choral singing. "We seek to be a transforming force in society through choral performance, bringing understanding, mercy, justice, peace, and hope to a world that desperately cries out for these things."

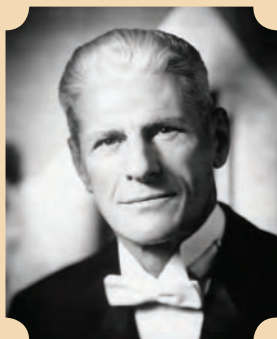
## SYMBOL OF A LIVING TRADITION

Many of the St. Olaf Choir's traditional purple robes, new in 2015–16 with a purple Norwegian cross insignia, are sponsored by friends of the college in celebration of the ensemble's legacy. The sponsorships represent a powerful connection across generations of singers.

Robe sponsorships are available for \$3,000 per robe, and sponsors can choose whom they'd like to honor or memorialize. Each gift is recognized with a personalized embroidered label sewn into the robe, and donors and honorees are listed on the choir's site at [stolaf.edu/stolaf-choir](http://stolaf.edu/stolaf-choir).



F. MELIUS CHRISTIANSEN  
1912–43



OLAF CHRISTIANSEN '25  
1941–68



KENNETH JENNINGS '50  
1968–90



ANTON ARMSTRONG '78  
1990–PRESENT



**CULLY Hauck '23**

TENOR I  
Northfield, Minn.  
biology

"As a Northfield 'townie,' the St. Olaf Choir has been both a personal honor to be a part of, and a high standard to live up to. The self-discipline, commitment, and reliability it demands will stay with me long after graduation."

**ALEXYS Sayegh '24**

ALTO II  
Corona, Calif.  
music education

"I love being in a choir that is so dedicated and skilled. We make such important and beautiful music — it's one of the highlights of my college experience."

**THOMAS Garcia '23**

TENOR II  
Phoenix, Ariz.  
philosophy

"The choral and performing arts scene in Phoenix has always been rich and vibrant, and I feel lucky and privileged that the St. Olaf Choir continues that same legacy of excellence that I've been immersed in for most of my life. I'm thankful that I've met so many like-minded musicians that care not only about the preservation of the arts, but also for the humans that create that said art."

**CHRIS Martin '23**

BASS I  
Berkeley, Calif.  
church music, music composition

"I love singing in a choir with so many people who have different experiences to my own, both in life and in music. We may have our separate lives, classes, and majors, but we all get to come together over the music and that is a truly beautiful thing."

**RACHEL Du Four '25**

SOPRANO I  
Fair Oaks, Calif.  
undeclared major

"Being in the St. Olaf Choir allows me to grow in my musicianship while making connections with incredible people. Singing in this choir contributes to bringing a sense of purpose and passion into my life, and it is an experience I will always look upon with gratitude."

# COMING HOME



**TOVE Trelstad-Larsen '24**

ALTO II

Tacoma, Wash.

gender and sexuality studies, religion

"My favorite thing about 'Ole Choir' is that it is both a community of singers and of good friends. It is close knit and welcoming, and that kind of understanding and care shines through the music we make together. It is truly a special group to be in."

**MURALI Meyer '25**

BASS II

San Francisco, Calif.

mathematics, music

"What drew me to the choir initially was of course the high level of excellence in music. However, I also found that almost without knowing it, I had become great friends with the other singers around me. This was especially heartwarming as a sophomore since I got to see not only the dedication of all of the senior members, but also feel welcomed into the fold by these other incredible voices."

**SOPHIA Sawoski '23**

ALTO II

Los Angeles, Calif.

music

"Since hearing the St. Olaf Choir perform live on their West Coast tour in Los Angeles five years ago, I've dreamed of continuing my choral studies at St. Olaf. I love singing in 'Ole Choir' because of the committed community of people and our shared goal of creating musical beauty."

**INDIA Bock '23**

SOPRANO II

Seattle, Wash.

gender and sexuality studies,  
history, political science

"Five years ago, I put St. Olaf on my college list after watching the St. Olaf Choir sing the most beautiful choral music I had ever heard on their tour stop in Seattle. I am so grateful that this choir ended up bringing me to a college where I have been able to grow as a musician, and more importantly, as a person."

**OLIVER Steissberg '23**

BASS I

Davis, Calif.

music performance

"I was not sure at first if I wanted to join the St. Olaf Choir because I knew it was a big time commitment. Now that I'm in, I can't imagine being away from this singing community. The support I feel every day helps me through the hard times, and helps me feel cared for and uplifted at the piano too."

The St. Olaf Choir includes 10 members who are returning to their hometowns on tour. These students were drawn to St. Olaf for its academic rigor, supportive community, and commitment to the liberal arts. The college offers a conservatory-style music education replete with around-the-world performance opportunities blended with depth of study in the broadest range of academic fields.

# THE GIFT OF MUSIC

*Gifts in support of music ensembles at St. Olaf College have the power to transform lives.*

St. Olaf College welcomes gifts to endowments and scholarships that support its renowned music ensembles for various activities including international touring, special projects, and recordings. Additionally, gifts to St. Olaf's annual giving program, the St. Olaf Fund, support faculty, staff, and students in their daily learning and living on the Hill. These gifts can be directed to the St. Olaf Choir for immediate needs, such as in support of new robes, travel, high school choral workshops, artistic collaborations, and performance opportunities.

*The following funds support the St. Olaf Choir and its student members:*

Sigrid and Robert "BJ" Johnson Endowed Fund | The Smith Endowed Scholarship for International Music Travel

Kjos Endowment | Oriet Fardal Thompson Endowment

St. Olaf Choir 100<sup>th</sup> Anniversary Endowment Fund | The St. Olaf Fund

To learn more about these endowed funds or make a gift in support of music ensembles at St. Olaf College, contact Rebecca Otten, Assistant Vice President for Advancement at [otten@stolaf.edu](mailto:otten@stolaf.edu) or 800-776-6523. To make a one-time contribution to provide direct support for the St. Olaf Choir, please visit [go.stolaf.edu/giftofmusic](https://go.stolaf.edu/giftofmusic).

## COST-FREE DOMESTIC AND INTERNATIONAL MUSIC TOURS FOR STUDENTS

St. Olaf College's music ensembles have a storied history of touring both domestically and internationally, dating back more than a century. St. Olaf was among the first American colleges to tour a college music organization overseas in 1906 when the St. Olaf Band first toured Norway.

Now, its three premier music ensembles — the St. Olaf Band, St. Olaf Choir, and St. Olaf Orchestra — tour domestically each year and internationally once every four years. This provides the 75 to 95 members in each ensemble an opportunity to perform abroad while studying at St. Olaf. Domestic tours span the continental United States and have long been cost-free for students, providing them with an opportunity to perform in stunning spaces, delve deeply into nightly music-making, and form close-knit bonds with their classmates.

In 2019, St. Olaf College received a \$4.2 million gift commitment to create a new endowed fund that supports student travel costs for international music ensemble tours. The gift will now enable members of the St. Olaf Band, St. Olaf Choir, and St. Olaf Orchestra to tour internationally at no expense to them. 2023 marks the first year this fund will be used, as members of the St. Olaf Band will travel to Japan for the first cost-free international tour for St. Olaf students.



"Singing in Nidaros Cathedral, eating waffles with my Norwegian relatives, singing for King Harald V in Oslo, and jumping into ice-cold fjords in Larvik were some of the most meaningful experiences of my life. Without receiving financial aid, I would not have been able to go on the Norway tour, or have any of these life-changing moments. I am eternally grateful for the scholarships St. Olaf offers its students, and for the opportunities St. Olaf provides to make music at a professional level."

ALDEN BOSTWICK '20  
Northfield, Minnesota | MUSIC

## REMEMBERING SIGRID JOHNSON (1952–2022)

In March 2021, the St. Olaf community lost Sigrid Johnson, a beloved conductor, educator, and friend. Sigrid accepted a position at St. Olaf College in 1983 as artist-in-residence and a member of the voice faculty, where she conducted the Manitou Singers, the 100-voice, first-year treble choir. She taught at St. Olaf for 32 years until her retirement in 2015.

Sigrid was a loving nurturer, caring, and selfless. She deeply respected her fellow colleagues, who were wonderful supporters and collaborators and a great center of joy in her life. Unrelenting in pursuit of excellence, she dug deep to bring about the beauty in each musical piece her choirs presented. In 2007, she received the F. Melius Christiansen Lifetime Achievement Award, the highest honor given by the American Choral Directors Association of Minnesota, for providing outstanding contributions and distinguished service to choral music in Minnesota.

She is remembered for having said, “God gave me two beautiful sons, and every year I’m blessed with 100 daughters” (referring to her particular fondness for the Manitou Singers). To her students, she bequeathed life skills that reach far beyond music: the power of preparation, pride in their work, deference and respect, and the importance of listening to each other. She inspired and imprinted these values on thousands of young singers. But above all else, she fervently believed that people — all people everywhere — mattered.



### HOW YOU CAN HEAR US

#### STREAM THIS CONCERT AND MORE

Go to [stolaf.edu/multimedia](http://stolaf.edu/multimedia) to watch the livestream broadcast of the St. Olaf Choir’s home concert on Friday, February 17 at 7:30 p.m. CT. The St. Olaf Christmas Festival is broadcast live each year and is available to stream on Spotify, Apple Music, Amazon, etc.

**80+** choral and instrumental concerts are streamed live and archived per year.

Recordings of the St. Olaf Choir are available to stream and download on Spotify, Apple Music, Amazon, and more!



#### IN THE SPOTLIGHT

Ensembles regularly garner national recognition.

##### ST. OLAF CHOIR

Won two 2014 regional Emmy Awards for the PBS television broadcast of *Christmas in Norway with the St. Olaf Choir*

Toured Norway in 2019

Performed at Carnegie Hall in 2020

##### ST. OLAF ORCHESTRA

Won the 2013 and 2018/19 American Prize in Orchestral Performance among colleges and universities

Toured Norway in 2019

Performed at Carnegie Hall with Sarah Chang in 2019

##### ST. OLAF BAND

Won the 2021 American Prize in Band/Wind Ensemble Performance in the college/university (smaller program) division

Tours Japan in 2023

Selected to perform at the 2023 Minnesota Music Educators Association Convention

##### ST. OLAF JAZZ

Awarded “Outstanding Performance by Large Undergraduate Jazz Ensemble” by *Downbeat* magazine in 2019

## ST. OLAF COLLEGE MUSIC FACULTY

**Kathryn Ananda-Owens**, department chair, professor, piano, piano literature, chamber music; B.A., Oberlin College; B.M., Oberlin Conservatory; M.M., D.M.A., Peabody Institute

**Francesca Anderegg**, associate professor, violin, viola, chamber music; B.A., Harvard University; M.M., D.M.A., The Juilliard School

**Scott Anderson**, associate professor, clarinet, chamber music; B.M., Eastman School of Music; M.M., Northwestern University

**Anton Armstrong**, Harry R. and Thora H. Tosdal Professor of Music, choir, conducting, voice, pedagogy for young voices; B.M., St. Olaf College; M.M., University of Illinois; D.M.A., Michigan State University

**Christopher Atzinger**, associate professor, piano, piano literature; B.M., University of Texas-Austin; M.M., University of Michigan; D.M.A., Peabody Institute

**James Bobb**, Elliot M. and Klara Stockdal Johnson Chair Associate Professor, church music, organ, choir, chapel cantor, collegium musicum; B.M., Capital University; M.M., Eastman School of Music

**Rachel Brandwein**, visiting assistant professor\*, harp, music theory; B.M., University of Michigan; M.M., The Juilliard School; D.M.A., Stony Brook University

**Michael Buck**, adjunct associate professor\*, Norseman Band; B.M., St. Olaf College; M.M., Vandercook College of Music; D.M.A., The University of Southern Mississippi

**Sarah Hohenstein Burk**, adjunct instructor\*, jazz piano; B.M., University of Minnesota - Duluth; M.L.S., University of Minnesota

**David Carter**, department vice chair, professor, cello, string techniques, string literature and pedagogy, music appreciation, chamber music; B.F.A., University of Minnesota; M.M., Indiana University; D.M.A., University of Illinois

**David Castro**, associate professor, music theory; B.M.E., Pacific Union College; M.M., University of Arizona; Ph.D., University of Oregon

**Kurt Claussen**, adjunct instructor\*, saxophone, chamber music; B.A., St. Olaf College; certificat, Conservatoire de Bordeaux Jacques Thibaud (France); M.M., University of Minnesota

**Anna Clift**, adjunct instructor\*, cello; B.M., Indiana University; M.M., SUNY-Stony Brook

**Julie Elhard**, adjunct instructor\*, collegium musicum; B.M., Concordia College, Performance Certificate, Royal Conservatory of Music, The Netherlands

**Jerry Elsbernd**, visiting instructor\*, voice; B.M.V.Ed., M.V.Ed., North Dakota State University

**Tracey Engleman**, associate professor, voice, vocal pedagogy; B.M., St. Olaf College; M.M., D.M.A., University of Minnesota

**Louis Epstein**, associate professor, musicology; B.A., Princeton University; Ph.D., Harvard University

**Alison Feldt**, associate dean of fine arts, professor, voice, vocal solo literature; B.A., Luther College; M.A., University of Iowa; D.M.A., University of Minnesota

**Daniel Fretland**, adjunct instructor\*, trumpet; B.A., University of Minnesota; M.A., Ed.S., University of St. Thomas

**Leigh Ann Garner**, assistant professor, music education; B.A., St. Olaf College; M.A. in Music Education, University of St. Thomas; Ed.D., University of St. Thomas

**Charles Gray**, professor, violin, viola, string literature and pedagogy, chamber music; B.M., Wheaton College; M.M., University of Michigan

**Thea Groth**, adjunct assistant professor\*, bassoon; B.M., University of Hartford; M.M., Manhattan School of Music; D.M.A., University of Hartford

**Philip Hey**, adjunct instructor\*, drum set; B.A., University of Minnesota

**Therees Tkach Hibbard**, Associate Professor of Practice, voice, choir, conducting; B.M., Longwood University; M.M., Colorado State University; D.M.A., University of Oregon

**Martin Hodel**, professor, orchestra, trumpet, chamber music; B.A., Goshen College; M.M., University of North Carolina-Chapel Hill; D.M.A., Eastman School of Music

**Eri Isomura**, adjunct instructor\*, percussion, improvisation ensemble; B.M., St. Olaf College; M.M., The Boston Conservatory

**Rehanna Kheshgi**, assistant professor, ethnomusicology, gamelan; B.A., Goshen College; M.M., University of London; Ph.D., University of Chicago

**April Kim**, assistant professor\*, piano; B.M., St. Olaf College; M.M., Cleveland Institute of Music; D.M.A., University of Missouri-Kansas City

**Dale Kruse**, associate professor of practice, voice, lyric theatre; B.A., Luther College; M.M., Drake University; D.M.A., University of Minnesota

**Dana Maeda**, instructor\*, oboe, woodwind techniques, music education, chamber music, collegium musicum; B.M., St. Olaf College; M.A., St. Mary's University

**Jill Mahr**, adjunct instructor\*, handbell ensembles, flute; B.M.E., B.M., University of Minnesota - Duluth; M.M., Northwestern University

**Timothy Mahr**, Robert Scholz Endowed Chair Professor of Music, band, conducting, composition, music education; B.M., B.A., St. Olaf College; M.A., D.M.A., University of Iowa

**Jenna McBride-Harris**, visiting assistant professor\*, horn; B.M., St. Olaf College; M.M., University of Cincinnati; D.M.A., Ohio State University

**Matthew McClung**, visiting associate professor\*, percussion, percussion techniques; B.S., University of Cincinnati; M.M., Cincinnati College-Conservatory of Music; D.M., Shepherd School of Music at Rice University

**Justin Merritt**, professor, composition, theory, orchestration; B.M., Trinity University; M.M., D.M.A., Indiana University

**Johnathan Moeller**, adjunct instructor\*, guitar; B.A., McNally Smith College of Music; M.M., Minnesota State University Mankato

**Chris Olson**, adjunct instructor\*, jazz; B.M., University of Wisconsin-Stevens Point; M.M.: University of North Texas

**Chung Park**, associate professor, viola, orchestra; B.M., Peabody Conservatory of Music; M.M., University of Illinois (conducting); M.M., University of Western Michigan (viola performance); D.M.A., University of Miami

**Sarah Pradt**, adjunct assistant professor of music\*, hardanger fiddle; B.A., M.A., Ph.D., Cornell University

**Catherine Ramirez**, artist in residence, flute, chamber music; B.A., Occidental College; diploma with honors, Istituto Musicale "L. Boccherini"; M.M., Yale University; M.A., Queens College; D.M.A., Rice University

**Catherine Rodland**, artist in residence, organ, theory; B.M., St. Olaf College; M.M., D.M.A., Eastman School of Music

**Ray Shows**, adjunct instructor\*, violin, viola, chamber music; B.M., Florida State University; M.M., Boston University

**Shari Speer**, visiting instructor\*, lyric diction, voice; B.M.E., Augustana College; M.M. Westminster Choir College

**Emery Stephens**, assistant professor, voice; B.A., Gordon College; M.M., Boston University; D.M.A., University of Michigan

**Jason Tanksley**, adjunct instructor\*, tuba; B.M., Wayne State University; M.M., Cleveland Institute of Music

**KrisAnne Weiss**, adjunct assistant professor\*, voice; B.A., B.M., Lawrence University; M.M., D.M.A., University of Minnesota

**Peter Whitman**, adjunct instructor\*, jazz ensembles, jazz saxophone; B.M., M.M., University of North Texas State

**Karl Wiederwohl**, visiting assistant professor\*, trombone, euphonium, chamber music; B.M. Peabody Institute; M.M., D.M.A., University of Maryland

**Karen Wilkerson**, instructor, voice; B.A., California State University-Northridge; M.M., Westminster Choir College

**David Williamson**, adjunct instructor\*, string bass; B.M., Curtis Institute of Music

**Tesfa Wondemagegnehu**, assistant professor, choir, voice; B.M., University of Memphis; M.M., Florida State University

\* part time

### MUSIC DEPARTMENT STAFF

**Kathryn Ananda-Owens**, department chair

**David Carter**, department vice chair

**Barbara Barth**, academic administrative assistant

**Lisa McDermott**, academic administrative assistant

**Lori Folland**, collaborative pianist

**Jason Bystrom**, instrument repair technician

**Szu-Ling Wu**, collaborative pianist



# ST. OLAF COLLEGE



St. Olaf College's beautiful 300-acre campus is located in Northfield, Minnesota, approximately 40 miles south of the Twin Cities of Minneapolis and St. Paul. St. Olaf is home to 3,000 students from nearly every state and more than 80 countries and offers 85-plus majors, concentrations, and academic programs. Students participate in large numbers in the nation's leading study abroad program, engage in more than 200 student organizations, and network with alumni to create internship, service, and research opportunities.

**[go.stolaf.edu](http://go.stolaf.edu)**

# ST. OLAF CHOIR WINTER TOUR 2023 ITINERARY

PURCHASE TICKETS AT [stolaf.edu/tickets](http://stolaf.edu/tickets) or 800-363-5487

## SUNDAY, JANUARY 22 • 3 P.M.

Bethel Lutheran Church  
Rochester, Minnesota

## SUNDAY, JANUARY 29 • 3 P.M.

Mesa Arts Center  
Mesa, Arizona

## MONDAY, JANUARY 30 • 7 P.M.

St. Margaret's Episcopal Church  
Palm Desert, California

## TUESDAY, JANUARY 31 • 7 P.M.

Village Presbyterian Church  
Rancho Santa Fe, California

## WEDNESDAY, FEBRUARY 1 • 7 P.M.

First United Methodist Church  
Pasadena, California

## THURSDAY, FEBRUARY 2 • 7 P.M.

San Luis Obispo Performing Arts Center  
San Luis Obispo, California

## SATURDAY, FEBRUARY 4 • 3 P.M.

*With special guest, iSing Silicon Valley*  
Grace Cathedral  
San Francisco, California

## MONDAY, FEBRUARY 6 • 7 P.M.

Mondavi Center  
Davis, California

## WEDNESDAY, FEBRUARY 8 • 7 P.M.

First United Methodist Church  
Eugene, Oregon

## THURSDAY, FEBRUARY 9 • 7 P.M.

Trinity Episcopal Church  
Portland, Oregon

## FRIDAY, FEBRUARY 10 • 7:30 P.M.

Benaroya Hall  
Seattle, Washington

## FRIDAY, FEBRUARY 17 • 7:30 P.M.

Boe Memorial Chapel  
St. Olaf College  
Northfield, Minnesota

### 2023 ST. OLAF SUMMER MUSIC ACADEMY

JUNE 25-JULY 1

The St. Olaf Summer Music Academy is back! Join high school students from around the nation for an intense week of music-making under the direction of St. Olaf College's acclaimed music faculty. Students will return home with new skills, new energy, new friends, and a heightened commitment to music. Registration opens mid-January.

For more information, please visit:  
[stolaf.edu/conferences/summer-camps](http://stolaf.edu/conferences/summer-camps).



### INTERESTED IN BEING AN OLE?

Hi there! I'm Molly, your go-to admissions person for St. Olaf's renowned music and fine arts program, as I oversee the fine arts scholarship process and music major applications. Please reach out to me directly if you have any questions about St. Olaf.

email [boes1@stolaf.edu](mailto:boes1@stolaf.edu)  
text or call (507) 786-3297

### FOLLOW US ON SOCIAL!



@stolaf\_music



@stolafchoir



@stolafmusic