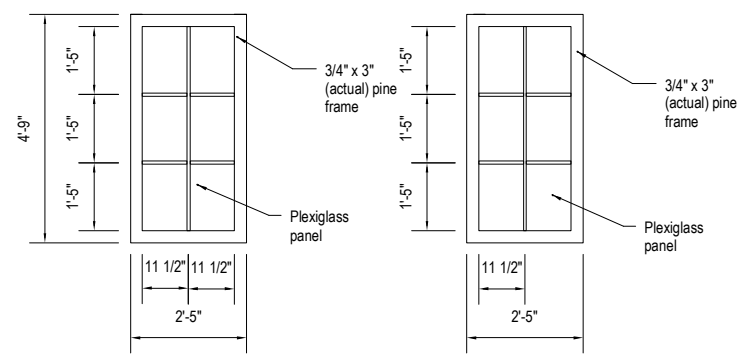
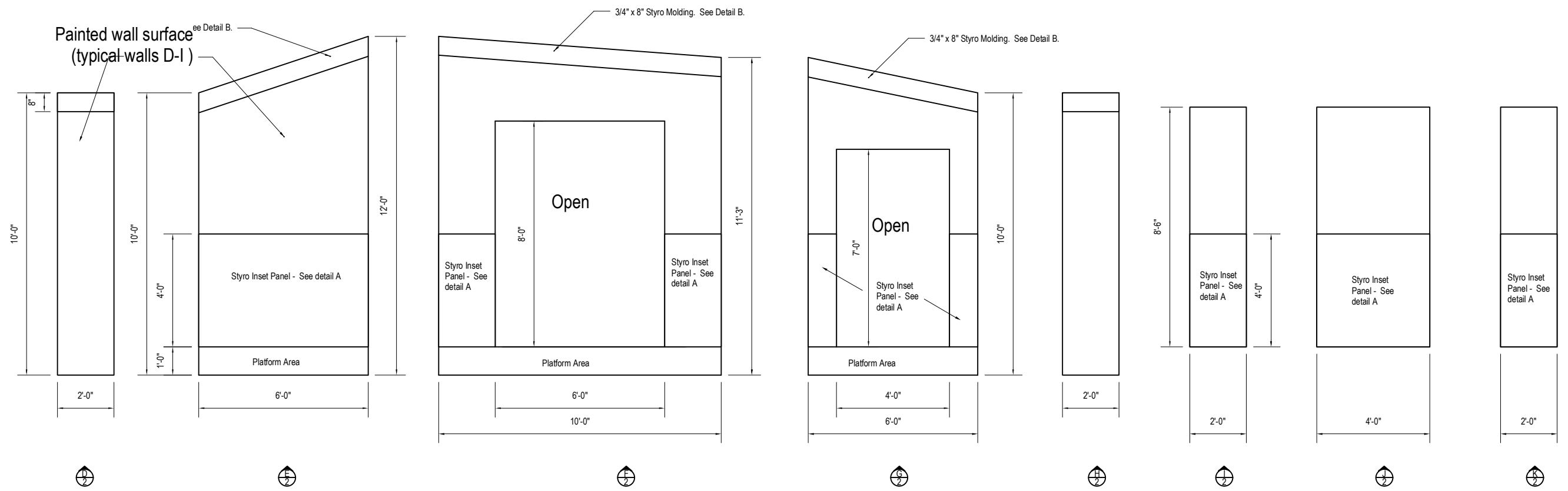
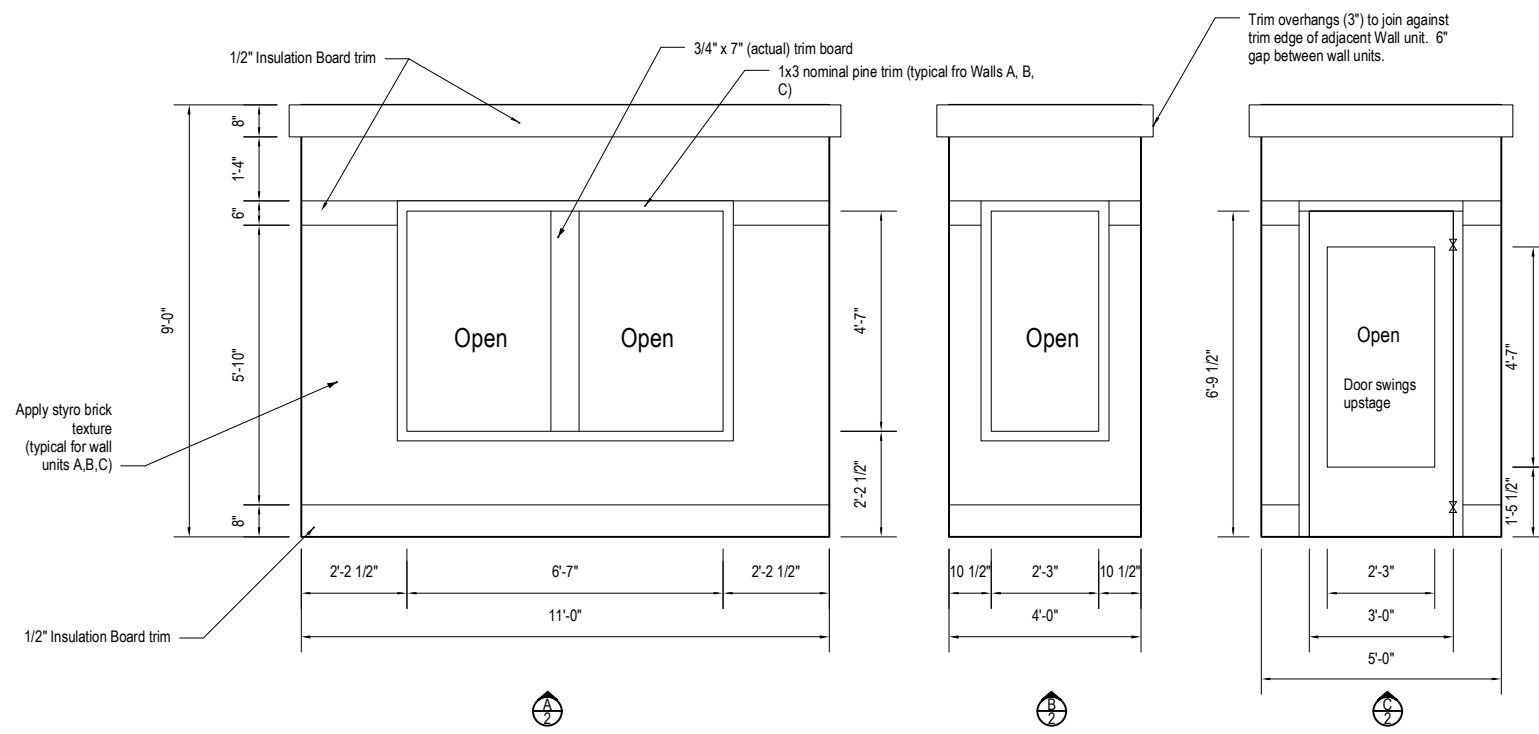


Window unit for Wall "A" (make 2)  
Attach to back side of flat. Window is 2" larger than opening in flat.

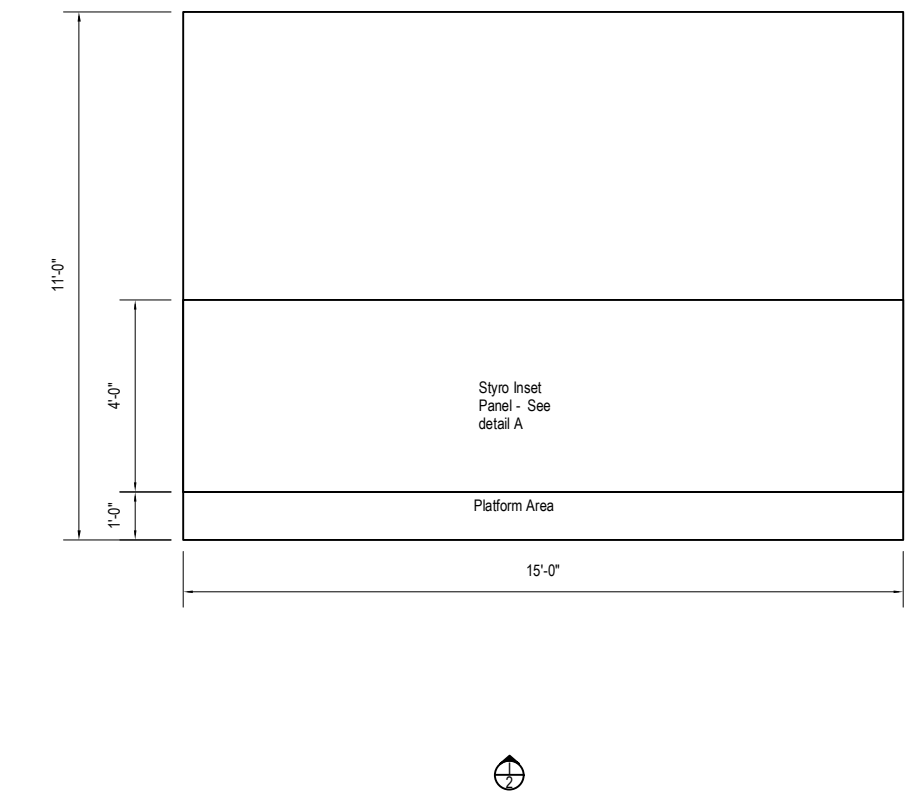
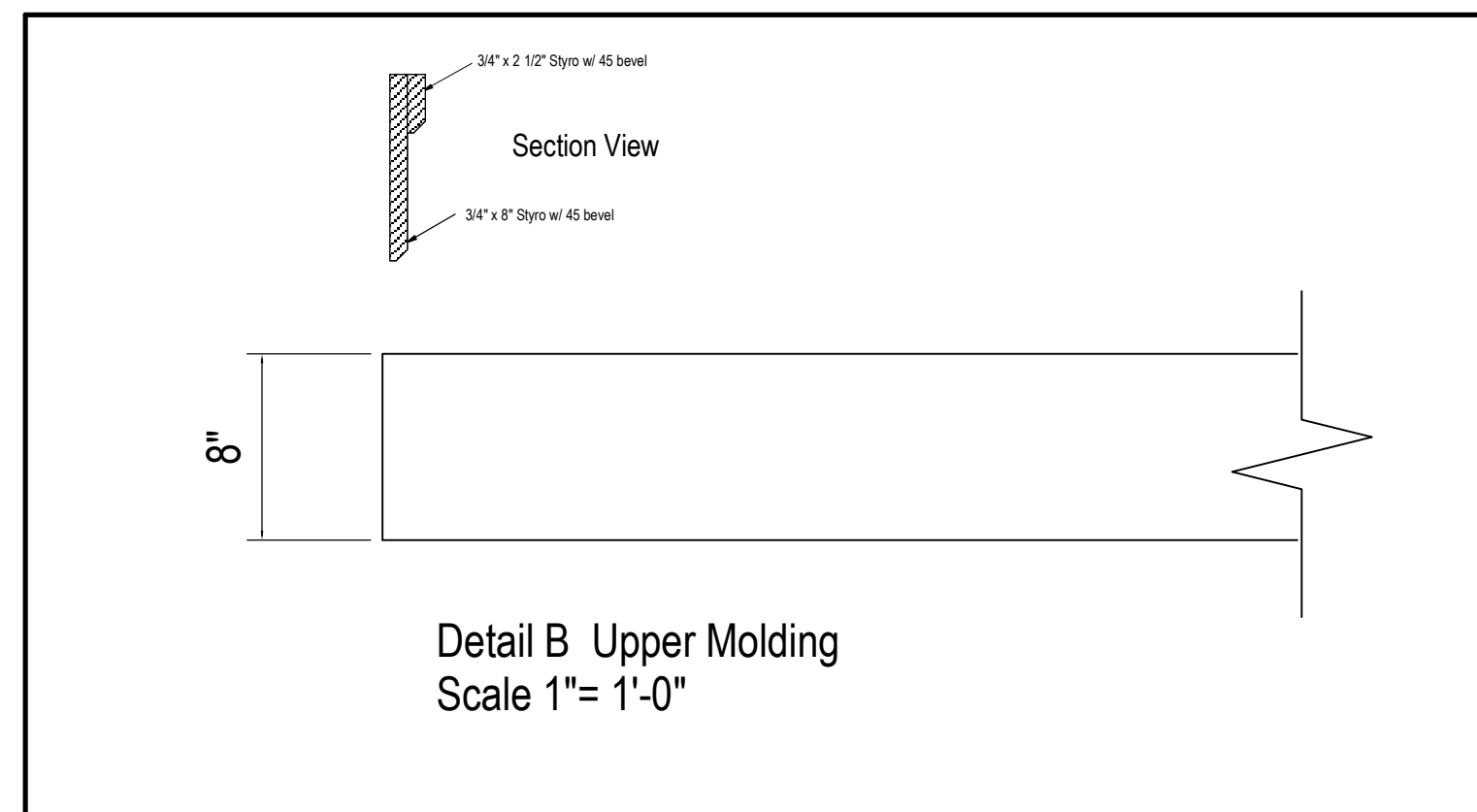


Window unit for Wall "B"  
Attach to back side of flat. Window is 2" larger than opening in flat.

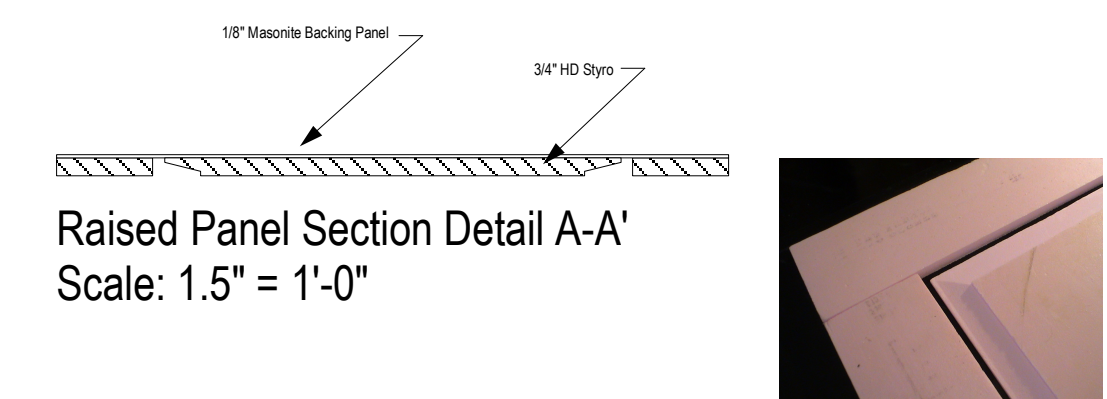
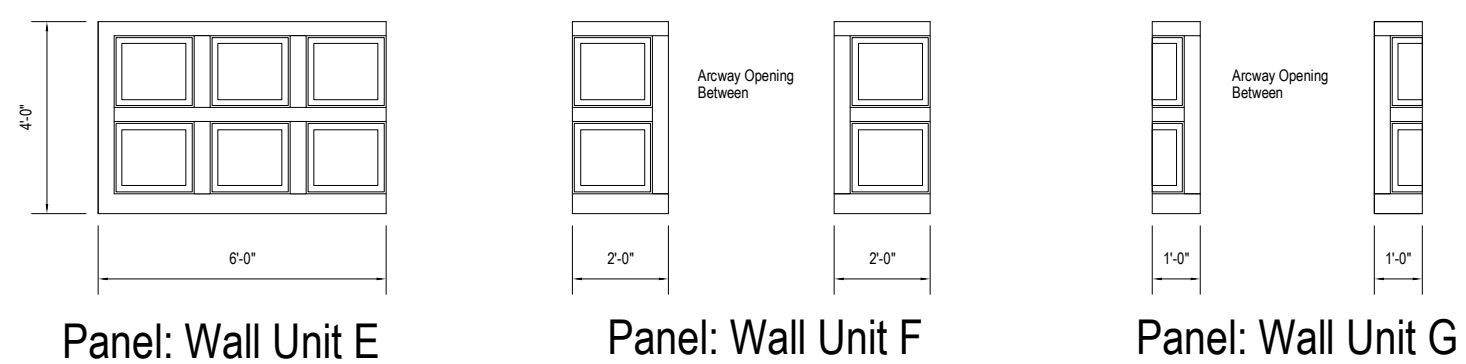
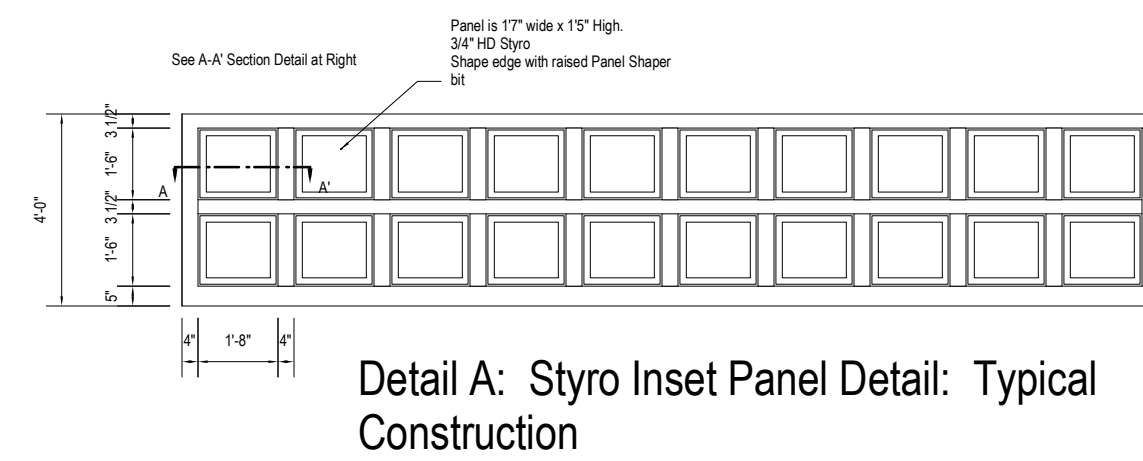
Window unit for Wall "C" Door  
Attach to back side of door. Window is 2" larger than opening in door.



Brick Size: 8 1/2" wide x 2 1/2" High with 1/2" Mortar joints recessed 1/4"



Detail View: Wall B- Typical for Walls A, B, C



<b>Les Belles Soeurs</b>	
St. Olaf Kelsey Theater	
Floorplan	
12/12/07	Scale: 1/4"
B. Bjorklund	Revision: 2/18/08